

LATAH COUNTY, IDAHO

Inventoried Roadless Area Recommendations

**A summary of Latah County Inventoried Roadless Areas,
public involvement and comments, and
recommendations of the Board of County Commissioners**



Version: March 1st, 2006

LATAH COUNTY, IDAHO

Inventoried Roadless Area Recommendations

Information Compiled By:
William E. Schlosser, Ph.D.
Tera King, B.S.
Toby Brown, B.S.
Adrienne L. Oryhon, B.S.

Northwest Management, Inc.
233 East Palouse River Drive
P.O. Box 9748
Moscow, Idaho 83843
Phone 208-883-4488 • Fax 208-883-1098
www.Consulting-Foresters.com

Table of Contents

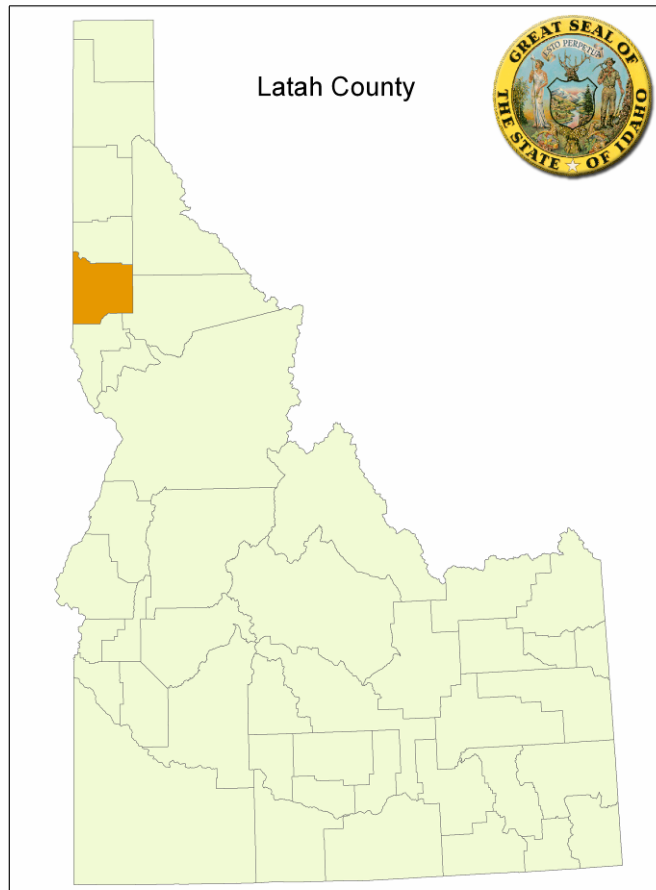
TABLE OF CONTENTS.....	I	Silver Creek – Pilot Knob IRA	32	
PURPOSE OF THIS REPORT.....	1	West Meadow Creek IRA.....	33	
PUBLIC INVOLVEMENT AND COMMENTS.....	3	RECOMMENDATIONS OF THE BOARD OF	COUNTY COMMISSIONERS.....	34
PUBLIC MEETINGS	3	LATAH COUNTY COMMISSION RECOMMENDATIONS	35	
<i>December 8th, 2005 Public Meeting Minutes</i>	3	RESOLUTION OF ADOPTION	36	
SUMMARY OF WRITTEN COMMENTS.....	10	SUPPORTING INFORMATION	37	
<i>Summary of general comments received by Latah</i>		BOARD OF COUNTY COMMISSIONERS	37	
<i>County</i>	10	PREPARERS	37	
<i>Summary of comments specific to Latah County</i>	11	<i>Northwest Management, Inc.</i>	37	
<i>Summary of comments specific to the Idaho Panhandle</i>		TABLE OF TABLES.....	38	
<i>National Forest</i>	11	TABLE OF FIGURES	38	
<i>Summary of comments specific to the Clearwater</i>				
<i>National Forest</i>	12			
<i>Summary of comments specific to the Nez Perce</i>				
<i>National Forest</i>	13			
<i>Summary of comments on Specific Inventoried</i>				
<i>Roadless Areas on the Idaho Panhandle National</i>				
<i>Forest</i>	15			
Blacktail IRA.....	16			
Grandmother Mountain IRA.....	16			
Pinchot Butte IRA	16			
<i>Summary of comments on Specific Inventoried</i>				
<i>Roadless Areas on the Clearwater National Forest...</i>	16			
Bighorn - Weitas IRA.....	16			
Hoodoo IRA	17			
Eldorado Creek IRA	18			
Lochsa Face IRA	18			
Lolo Creek IRA	19			
Mallard - Larkins IRA	19			
Meadow Creek – Upper North Fork IRA	20			
Moose Mountain IRA.....	21			
North Fork Spruce – White Sand IRA.....	21			
North Lochsa Slope IRA	22			
Pot Mountain IRA	22			
Rawhide IRA.....	23			
Siwash IRA.....	24			
Sneakfoot Meadows IRA.....	24			
Weir – Post Office Creek IRA.....	25			
<i>Summary of comments on Specific Inventoried</i>				
<i>Roadless Areas on the Nez Perce National Forest....</i>	25			
Clear Creek IRA	25			
Dixie Summit – Nut Hill IRA.....	26			
East Meadow Creek IRA.....	26			
John Day IRA	27			
Lick Point IRA	27			
Little Slate Creek IRA	28			
Mallard IRA	28			
Middle Fork Face IRA.....	29			
North Fork Slate Creek IRA	29			
O’Hara – Falls Creek IRA	30			
Rackliff - Gedney IRA	31			
Rapid River IRA.....	31			
Salmon Face IRA	31			

Purpose of this Report

Inventoried Roadless Areas (IRA) are summarized in this chapter including specific information by IRA, maps of each IRA and additional information needed to allow the reader to understand the IRA forest plan recommendations in the county.

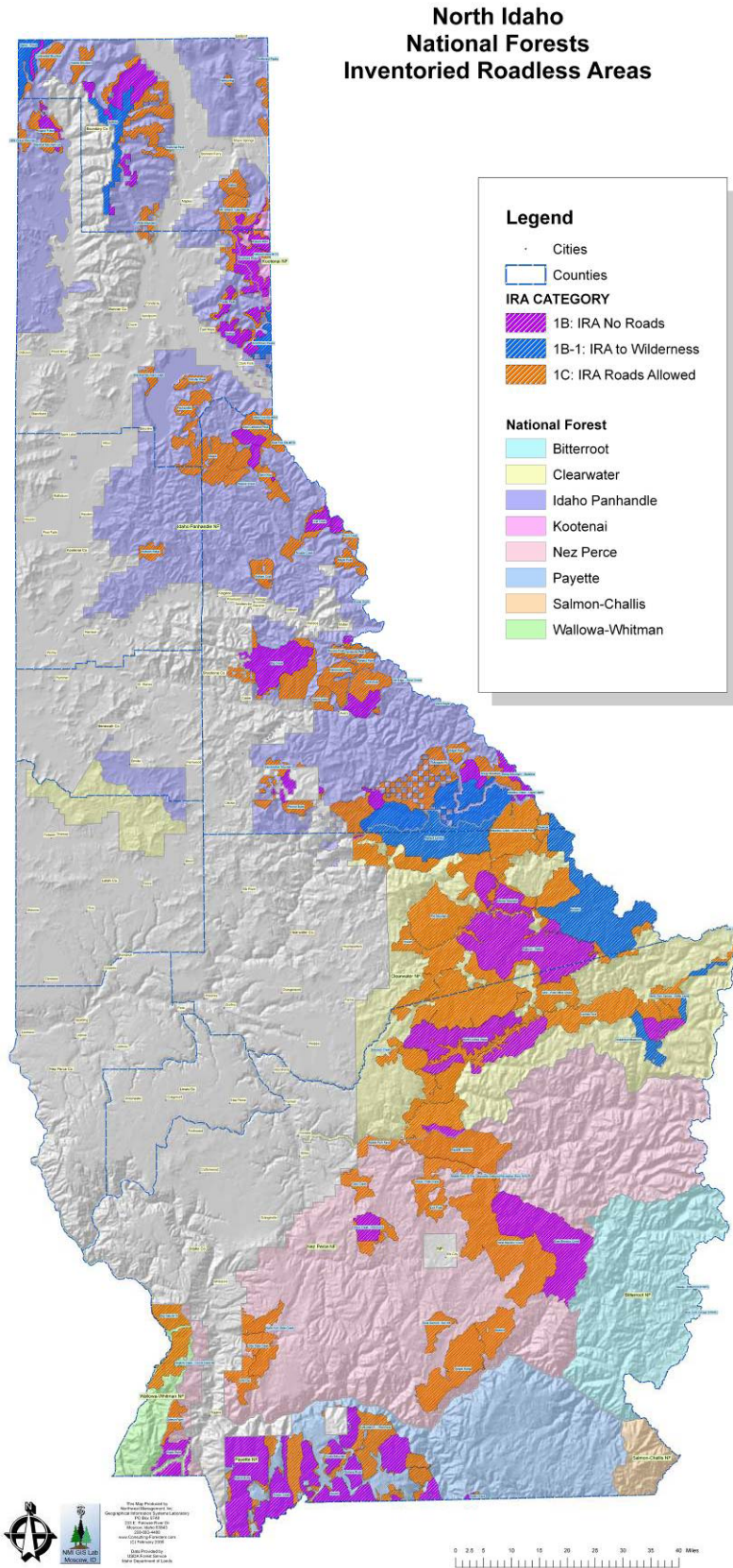
Latah County is located in the Idaho Panhandle and borders the state of Washington to its west, and the counties of Nez Perce, Clearwater, Shoshone, and Benewah. There are no Inventoried Roadless Areas (IRA) within the borders of Latah County.

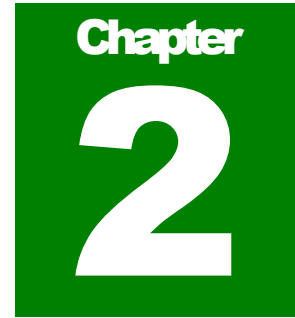
Figure 1.1. Location Map of Latah County.



INVENTORIED ROADLESS AREA SUMMARY

Figure 1.2. Inventoried Roadless Areas in Northern Idaho.





Public Involvement and Comments

In order to facilitate public input on Inventoried Roadless Areas in Idaho, counties containing or affected by the management of Inventoried Roadless Areas were asked to hold a public information meeting as well as collect written public comment. Summaries of those meetings and the written public record follow. In addition, the draft of this document was available at the County Courthouse for public review approximately two weeks prior to the County Commission's formal adoption of their recommendations to Governor Kempthorne.

Public Meetings

Latah County held a public meeting to facilitate information regarding the Inventoried Roadless Areas in neighboring counties. Formal information was presented by North Idaho County Commissioners and representatives from the Forest Service. There was also time allotted at the meetings for members of the public to make oral statements. Attendees were encouraged to provide written comment to the Latah County Commissioner's Office.

December 8th, 2005 Public Meeting Minutes

1. Welcome and introductions
2. Overview of Idaho's Road less Areas Public Comment Process
 - Jim Caswell, Office of Species Conservation, State of Idaho
3. Latah County's Role in Public Comment Process
4. Deadline for Submission of Comments - January 6, 2006, 5PM
5. Questions?

Acting Chairman Commissioner Paul Kimmell opened the meeting at 5:40 p.m., identified those present, stated purpose of hearing and procedures to be followed. Commissioner Nelson not present in Boise. Public Meeting, trying to educate everyone, both Commissioners and public. Will not be a public hearing, will not take official testimony. All Comments will be received in writing. If want more copies can have copies mailed. Intended to be a meeting, not a formal hearing.

Introduced Jim Caswell, State of Idaho, Governor's office.

Jim Caswell, gave presentation. Background. Rule and timing. Talk about Governor's interest in this. Will address questions.

PUBLIC INVOLVEMENT AND COMMENTS

Clinton rule, litigated by nine lawsuits, Idaho actually one of state's that filed against that rule. Two lawsuits settled out of court, 9 lawsuits were filed. In 2003 Judge in Arizona, ruled Presidents rule was not legal. NEPA analysis was set aside. Other rule that it violated was that it violated wilderness act. He enjoined the implantation of that rule. Developed in 2004 a draft proposal that would put a different federal rule in place that would give the states and the Governors the ability to make comments on the rules. The rule is very very broad. No prescriptive language in procedures to be followed. Governor Kempthorne, said yes, we need to take this opportunity as a state and to reach out and take comments from the people, especially the people in those areas that use those areas. Asked Commissioners to facilitate the input from the citizens.

38 meetings so far state wide. Every county does it differently, no prescribed process. This meeting is an informational meeting. Some counties take oral and written comment. Some counties take only written. Some counties have set up a board to review the comments before they are forwarded to the governor. Counties decision on how they want to proceed. Every forest in state has plan, every roadless area has a plan. What does it say in the plan how this area will be managed and how do you feel about that. The Governor wants recommendations from the counties by first of March.

After Governor receives all comments, Governor will assemble and forward Petition to Secretary of Interior. Thinks it will be a broad statement, not a detailed resolution. Once Secretary receives Petition, will evaluate through a national committee. 12 people on it nationally. Jim Reilly out of Coeur d'Alene, Bob Cope, Lemhi county commissioner on it, leader from group out of Tucson. They will review and make a recommendation whether or not adequate, then Secretary will begin to make a rule. We have asked counties to coordinate with each other. We need recommendation by national forest. To that end, the commissioners have set up leads in each part of the state. Group of counties are working together to make one unified recommendation.

Open for questions.

There are several things on Association. First of all frequently asked questions. Rule, set of handouts in back, comments must be by forest. Every single roadless area must have separate package.

PK: one of things out front, is sign up sheet, can sign up and have packets mailed to you. Clearwater form seems to be most user friendly, www.idcounties.org, click on roadless area. Will have roadless q and a and forms. We have no roadless areas in our counties, realize many use roadless areas throughout the state. Will collect comments, send those to respective counties and send to governor.

Public: misunderstanding of hearing instead of meeting. We would like to make some statements, but can you take our comments and forward those comments.

PK: would prefer that the comments be put in word and and then forwarded. They must make sense, must be consistent, have a fairly quick turn around. Want comments by January 6.

Public: if we are to send a message, strong sentiment to protect roadless areas. These are public lands owned by all Americans. Clearwater has a deadline of December 15, will our comments be accepted if we don't send them by January 6.

PK: yes. All comments will be sent on to proper counties.

PUBLIC INVOLVEMENT AND COMMENTS

Public: forms. User friendly is not a word I would use for these forms, feel very confusing. The process the federal government is using...90% supportive of protecting roadless area, will counties more or less go along with comments from citizens...

JC: Petition will not write rule. Rule will be subsequent to Petition. Record will go with Petition. All comments counties receive and forward, will go with Petition as part of record. Needs to be forest by forest.

Public: will commissioners accept electronic comments.

PK: yes.

TS: The time frame, we are working with other Commissioners, very insistent receive written comments because of time frame and need it in writing so can study it, and have that record and those comments. Given time so can take that time and put in writing. Not looking for general comments, looking for specific comments for specific forests. Need to get information. Went to Orofino meeting. Set up this meeting, so you will know the ground rules and we can get some valuable input that can be forwarded to those other commissioners. We know the general opinion.

Public: concerned that the reams of paperwork, for every roadless area, the current trend in federal government is to reduce the paperwork. Federal Judge in Wyoming, in the spirit of President Clinton, feels a general opinion that applies to every forest. Just a one or two page letter. Should be sufficient. Relatively few citizens are going to be able to fill out a bunch of papers.

Public: doing it right at the holiday is very bad timing.

Public: if we do fill out the paperwork will it have any impact? I have interest in all roadless areas, every state, I should have as much input to all roadless areas. Seems like this is cutting out of the whole thing if we have to give specific comments on specific areas.

JC: when the rule was established, gave the Governor the ability as to how he wanted it to be handled. In Oregon for example, there is nothing happening directly, Governor of Oregon has sued. In Washington, will see revert back to forest planning. Forest plan revisions. In Wyoming that is going on right now. Developing a memorandum with the Secretary of Agriculture. In Montana, the Governor has gone around and talked to Commissioners, this week had a big meeting in Montana with all governors. Colorado, they have a commission, appointed by Governor, going around and taking comment and will make a recommendation to governor.

Public: grew up in Sandpoint, if I were to make a statement...if I were a timber, owner of big mill and lived in Washington, but worked in Idaho, could put pressure on my workers to make statements. I would like to see our Commissioners to tell Governor that this process is not fair and refuse to participate.

Public: Bush administration made it sound like...well, the Governor made it sound like people from outside Idaho cannot comment.

JC: they can comment, they can go to any county or send in written comments. Rule making is a national effort. Another option, can go directly to governor.

Public: article in today's Idahonian on Governor Kempthorne and his access. I would like everyone to read it before they fill out their papers.

PUBLIC INVOLVEMENT AND COMMENTS

Public: could you describe the process by which we could comment directly to Governor.

JC: just send it directly to Governor.

PK: let me clarify. Need to identify forest, plan, roadless area. Could be as simple as one page.

JC: can be very simple. Form was done by association, given to commissioners to be used to make simple, and organized. Suggestion, not a requirement. Not a requirement. Here is a set of comments from lady in Salmon, and commented on every forest. Fairly simple. Nothing in rule or nothing by Governor that says required to use rule. If you want to write a letter, write a letter, but not a vote, and not particularly helpful to just say I support roadless, what do you do with that. Right now, roadless areas are managed by plan.

Public: Judge in Wyoming ruled against the roadless rule. Ruled on injunction, and ruled against the roadless rule. Bush withdrew the roadless rule and said it is no longer in effect.

Public: like to know how many roadless areas in State of Idaho if I want to comment. Are there any assurances that my opinion will count. There were 2 million people that supported the roadless issue and those were disregarded.

JC: 281 roadless areas.

Public: don't you think that is absurd that I have to comment on 281 different area.

Public: if this is not a vote can you tell me what this is?

JC: is not a tally of votes, will look at what folks think about the plan that is currently in place and how they feel about that plan.

Public: if most people want it to remain roadless will you respect that?

Public: if 900 people say they want roadless and 5 people say want developed are they given equal consideration.

JC: governor said if there is a proposal to change current direction, wants to know why and how broadly is that supported. Broadly in terms of groups of interest.

Public: interest has more weight than the people in this room. If you are not looking for numbers, how will the governor know, if we are not taking vote how do you weigh the opinions. Think it should be a vote.

Deb: it is so vague, that how do you show that you have taken everyone's opinions and the majority feels one way or another. How are you going to show us that you are doing that?

Public: appeared when governor layed out this process, if people look at this, Latah county comments will go to a county that have and live in roadless areas. Even though it is a national forest and if you look at overall state and overall use, seems like people that actually live in a roadless area will have more weight.

JC: I don't think that is what happened. Local Commissioners may have a better way to get the comments from their people for their particular forest. Never any intent to cut out people that do not

PUBLIC INVOLVEMENT AND COMMENTS

have a forest in their counties. Right or wrong, we view it as a forest. So panhandle forest is an area. Commissioners can carry forward comments to any area.

PK: can we, once we get all the comments, can we, I want to be sure they get to the correct place whether to counties or governor. Can we send to counties and governor and we don't want to filter.

JC: yes.

PK: I think we will put in a package and forward them.

TS: I thought we had to work with the other commissioners. So I would like to send direct to Governor.

PK: we do need some semblance of order to send to Boise. Hopefully, these forms will help you to do that.

Will Boyd: from Friends of the Clearwater, over 650 members throughout the state. We are concerned about the health of our forests, many people have been left out of this process, natural beauty, stretches of unaltered lands, we must set aside these lands as incredible natural beauty. Largest area of roadless area in lower 48 states, many species, many endangered species, ancient cedars, salamanders, serve a valuable purpose to our landscapes, can be lost through encroachment areas, clean water, fishable waters, meadows, freedom from man made. Other areas have lost their roadless areas because of encroachment. Friends of Clearwater are circulating petition if want to sign. Have electronic forms for every roadless area in our state, will help folks fill out forms and have work session after this meeting.

Public: clarification thought you wanted proposals for areas, looking for comments on those.

Public: are we forming proposals or are there already plans.

JC: there is a current plan, will remain until plan is changed.

Public: how do I address each roadless area, I own every roadless area in the US.

Public: the current form addresses the proposal not the current. Leads to confusion.

Public: is there a web site where we can find these current plans. We have 281 plans where are they.

JC: each forest has a web site.

Public: in regards to working as a county, is there any way we can work together. Can we work toward a proposal and then sign a petition. A lot of us feel the same. Can we unify the proposal and then sign it so we don't all have to fill out the form. And then have that forwarded.

PK: yes, good idea and we could do that. Suggest follow Will and...have Friends of Clearwater put on website.

Public: if you go back to voting rights, yes you have right, but it is so complicated. If I send a one sentence, protect all roadless areas, will you take that one sentence and give it equal weight. If not why not.

PUBLIC INVOLVEMENT AND COMMENTS

JC: I already have lots of those. We have a lot of other too. We have those, but it just doesn't really give us a lot to help us to get to what is the best thing to do with this particular area. The thing you need to think about is the continuum issue and the... The other end is the administrative issue that the Forest Service uses. Every 10 or 15 years they make the decisions and the ultimate outcome. Very uncertain. In the middle is the rule making, and rule making provides more certainty that at the end of the day, that place will remain the same in accordance with the rules.

Representative Shirley Ringo: is proximity going to have more to say than people who are not in the area.

JC: no, I do not think that is what was said. He did say he wants to hear from citizens of state as opposed to the broader folks...what do the citizens of this state want to see happen to these areas.

JC: every forest has more than one county. Have counties going to gather and having input.

SR: concerned that if our commissioners have to go to another set of commissioners, doesn't seem that we will have the input we want.

PK: well, think will not be filtering, but in fairness to our commissioners in those other counties, I think those commissioners want to hear what our people think about the forests in their counties.

Public: concerned if some of us take the approach of packet, the governor may not be as interested in those as those in groups. would each person get weighted equally if we don't each turn in packet.

JC: same issue has been talked about, and they have said if you want to bring a group together, we feel this way on this position, that is fine. Each name will be equally weighted.

Public: procedural, once process goes through state level, gets passed on to another committee, is that committee reviewed 281 wilderness plan and then passing their recommendation...

JC: they will review the petition and make a recommendation to secretary of agriculture to accept petition.

Public: is there going to be a way to trace this, that the comments and the procedures are actually followed.

JC: there will be a record. In fact the counties have put out an RFP, to have someone help them put together the record. There will be a record put together and forwarded.

Public: but is there going to be a way to put together a tally.

JC: yes. And will need to look to the states around us and see what they are doing. We have areas around us that straddles the line. Need to be compatible to the degree we can.

Public: I am a guide, I wonder why your opening comments, can I be assured my comment matters as much as someone who lives nearer the forests.

JC: he said he wants to hear from the citizens and he wants to hear from the citizens who live, recreate and work in those areas.

PUBLIC INVOLVEMENT AND COMMENTS

PK: if you want some of those forms, sign up on those rosters, we will put a box on our web page to link to Idaho, and some of the forests. Learned from this meeting tonight and want to be a vehicle for comments and thank all for coming. Link to some forms.

TS: certainly learned a lot tonight, and we needed this information out to the people. Great ideas have come out tonight. We want input that is why we want in writing. Thanked all for coming, appreciate the turn out.

PK: thank Jim Caswell.

Recessed at 7:21 p.m.

PUBLIC INVOLVEMENT AND COMMENTS

Summary of Written Comments

Latah County Commissioners received many written public comments. Additionally, several members of the public and interest groups in Latah County commented on Inventoried Roadless Areas in other counties and/or to the Office of Species Conservation. Copies of the full public record of comments are available at the County Courthouse and at the Office of Species Conservation in Boise, Idaho.

Summary of general comments received by Latah County

Table 2.1 summarizes comments received by Latah County that are not specific to a national forest or an Inventoried Roadless Area. These comments typically focus on the commenter’s general opinion on the management of roadless areas in Idaho.

Table 2.1. General public comments received by Latah County.

Name	Comment Origin	Organization	Received By	Summarized Comment
Will Boyd	Moscow, ID	Friends of the Clearwater	Latah County	The US public has already spoken in the past in support of roadless and wilderness. It is not right for Idaho as a state to make decisions for all of America’s land.
George Hatley	Moscow, ID		Latah County	The roaded areas of the National Forest have adequate timber and mineral resources. There small percent of roadless areas should be protected not destroyed.
Sharon Sullivan	Moscow, ID		Latah County	Please keep full roadless protection in place for generations.
Bob Dudley	Moscow, ID		Latah County	Realistically redefine the minimum volume to classify land as capable of producing commercial timber.
Dianne French	Moscow, ID		Latah County	Protect the current wilderness as well as the Clearwater national forest.
Catharine M. Collins			Latah County	Idaho’s batholith granites may cause a rather large mess when building roads. Erosion and problems with water temperature can cause problems to the salmonid hatch. There will be problems with building roads in roadless areas due to endangered species. Wildlife habitat is reduced by roads and consequently people. The environment can take hundreds of years to repair.
Harry R. Jageman	Moscow, ID		Latah County	The value of roadless areas is to great to sacrifice for short-term economic gain. Protect these areas with tenacity.
Susan Drumheller	Sandpoint, ID		Latah County	Roadless areas should be protected from commercial activity. Existing roads can be maintained, but no new roads should be built. Roadless areas should be managed for non-motorized uses. Fuels reduction can be done when no new road construction is necessary.
David Robinson	Curlew, WA		Latah County	The states should not be able to determine the fate of America’s public lands.
Maria Theresa Maggi	Moscow, ID		Latah County	The process for roadless area input is not a legitimate way to decide the fate of public lands.
Mark Solomon	Moscow, ID		Latah County	The Forest Service should conserve roadless areas for now and all time.
Ned & Arlene Pence	Moscow, ID		Latah County	The IRA’s in Idaho total 9.3 million acres. The 1.4 million acres of inventoried roadless area in Idaho recommended for Wilderness should be designated as wilderness. 2.3 million acres do not have resources valuable enough to justify road building or unique enough features to be called wilderness. These areas should be maintained as roadless for motorized and non-motorized recreation. The remaining 5.6 million acres have resources valuable enough to warrant their extraction. Current technologies allow for the use of these lands, where it was not profitable or environmentally acceptable years ago.

PUBLIC INVOLVEMENT AND COMMENTS

Table 2.1. General public comments received by Latah County.

Name	Comment Origin	Organization	Received By	Summarized Comment
Danny Griffis	Troy, ID		Latah County	Our federal land is to be used by all Americans, even those who have lost their ability to walk long distances. Please leave the Federal lands the way they are—we have enough roadless areas.
Chad Farrell	Latah Co, ID		Latah County	The national forests need to be actively managed otherwise nature will take control of management with disturbance. Proper management requires roads. The forests to not need to be locked up as wilderness.
Jed Dennler	Orofino, ID	PLAY (public land access year-round)	Latah County	Any official or unofficial addition of wilderness in Idaho is not necessary since 12% of the state's land mass is currently wilderness and the demand is for use of public lands for multiple use recreation.
Pat & Jim Peck	Viola, ID		Latah County	Keep our roadless areas roadless.

Summary of comments specific to Latah County

Table 2.2 summarizes comments received by Latah County that are not specific to a national forest or Inventoried Roadless Areas; however, they do reflect the commenter's opinion on the general management of Inventoried Roadless Areas and how it will affect Latah County.

Table 2.2. Public comments specific to Latah County.

Name	Comment Origin	Organization	Received By	Summarized Comment
Vince & Lynn Murray	Moscow, ID		Latah County	The local meeting on IRA proposals was slanted toward the view of special interest. That aside I hope the commissioners will represent the views of the citizens and entire American public. Please defend the concept that these are National Forests whose status should not be subject to the whim of local politicians.
Jeanne Clothiaux	Moscow, ID		Latah County	Protect Idaho's treasured lands. Listen to the residents who care so much for the lands they call their own.
Charles Burke	Moscow, ID		Latah County	The Latah county commissioners should recommend to the governor that the IRA's remain undeveloped because they are an asset to the citizens of Latah County.

Summary of comments specific to the Idaho Panhandle National Forest

Table 2.3 summarizes the public comment received by Latah County regarding the general management of non-specific Inventoried Roadless Areas on the Idaho Panhandle National Forest.

PUBLIC INVOLVEMENT AND COMMENTS

Table 2.3. Public comments specific to the Idaho Panhandle National Forest.

Name	Comment Origin	Organization	Received By	National Forest	Summarized Comment
William Bonney	Moscow, ID		Latah County	Idaho Panhandle	Grandmother Mountain is a popular backpacking area. It has a lot of illegal and legal ORV use which damages trails and meadows. It needs full, absolute protection from motorized vehicles.

Summary of comments specific to the Clearwater National Forest

Table 2.4 summarizes the public comment received by Latah County regarding the general management of non-specific Inventoried Roadless Areas on the Clearwater National Forest.

Table 2.4. Public comments specific to the Clearwater National Forest.

Name	Comment Origin	Organization	Received By	National Forest	Summarized Comment
Marc Lawrence	Potlatch, ID		Latah County	Clearwater	Entire Wendover area should be closed to motor vehicles and recommended for wilderness.
Marc Lawrence	Potlatch, ID		Latah County	Clearwater	The entire Washington area should be closed to motorized vehicles and recommended for wilderness.
Garrett Clevenger	Moscow, ID		Latah County	Clearwater	The entire Washington area should be closed to motorized vehicles and recommended for wilderness.
Bennett Barr	Moscow, ID		Latah County	Clearwater	The entire Washington area should be closed to motorized vehicles and recommended for wilderness.
William Bonney	Moscow, ID		Latah County	Clearwater	The entire Washington area should be closed to motorized vehicles and recommended for wilderness.
Denim Jochimsen	Pullman, WA		Latah County	Clearwater	The entire Washington area should be closed to motorized vehicles and recommended for wilderness.
Bob Berry	Palouse, WA		Latah County	Clearwater	The entire Washington area should be closed to motorized vehicles and recommended for wilderness.
Maria Theresa Magi	Moscow, ID		Latah County	Clearwater	The entire Washington area should be closed to motorized vehicles and recommended for wilderness.
		Friends of the Clearwater	Latah County	Clearwater	The entire Washington area should be closed to motorized vehicles and recommended for wilderness.
Jeanne Clothiaux	Moscow, ID		Latah County	Clearwater	The entire Washington area should be closed to motorized vehicles and recommended for wilderness.
Robert Pangle	Moscow, ID		Latah County	Clearwater	The entire Washington area should be closed to motorized vehicles and recommended for wilderness.
Garrett Clevenger	Moscow, ID		Latah County	Clearwater	Entire Wendover area should be closed to motor vehicles and recommended for wilderness.
Bennett Barr	Moscow, ID		Latah County	Clearwater	Entire Wendover area should be closed to motor vehicles and recommended for wilderness.
William Bonney	Moscow, ID		Latah County	Clearwater	Entire Wendover area should be closed to motor vehicles and recommended for wilderness.

PUBLIC INVOLVEMENT AND COMMENTS

Table 2.4. Public comments specific to the Clearwater National Forest.

Name	Comment Origin	Organization	Received By	National Forest	Summarized Comment
Robert Pangle	Moscow, ID		Latah County	Clearwater	Entire Wendover area should be closed to motor vehicles and recommended for wilderness.
Ashley Martens	Moscow, ID		Latah County	Clearwater	Entire Wendover area should be closed to motor vehicles and recommended for wilderness.
Bob Berry	Palouse, Wa		Latah County	Clearwater	Entire Wendover area should be closed to motor vehicles and recommended for wilderness.
Empire Lumber, Bennett Forest Industries, Konkolville Lumber Co., Three Rivers Timber, Inc.	Kamiah, Id	Clearwater Timber Working Group	Latah County	Nez Perce	Recommends that all other roadless areas not specifically mentioned be open for timber management and motorized recreational use in their entirety.
David Hall	Moscow, ID		Latah County	Clearwater	Entire Wendover area should be closed to motor vehicles and recommended for wilderness.

Summary of comments specific to the Nez Perce National Forest

Table 2.5 summarizes the public comment received by Latah County regarding the general management of non-specific Inventoried Roadless Areas on the Nez Perce National Forest.

Table 2.5. Public comments specific to the Nez Perce National Forest.

Name	Comment Origin	Organization	Received By	National Forest	Summarized Comment
Marc Lawrence	Potlatch, ID		Latah County	Nez Perce	Entire Upper Bear Creek area should be closed to motor vehicles and recommended for wilderness.
Bob Barry	Palouse, WA		Latah County	Nez Perce	Entire area adjacent to Gospel Hump should be closed to motor vehicles and recommended for wilderness.
Bennett Barr	Moscow, ID		Latah County	Nez Perce	Entire area adjacent to Gospel Hump should be closed to motor vehicles and recommended for wilderness.
David Hall	Moscow, ID		Latah County	Nez Perce	Entire area adjacent to Gospel Hump should be closed to motor vehicles and recommended for wilderness.
William Bonney	Moscow, ID		Latah County	Nez Perce	Entire area adjacent to Gospel Hump should be closed to motor vehicles and recommended for wilderness.
Robert Pangle	Moscow, ID		Latah County	Nez Perce	Entire area adjacent to Gospel Hump should be closed to motor vehicles and recommended for wilderness.
Garrett Clevenger	Moscow, ID		Latah County	Nez Perce	Entire area adjacent to Gospel Hump should be closed to motor vehicles and recommended for wilderness.
Bob Barry	Palouse, WA		Latah County	Nez Perce	Entire West Fork Crooked River area should be closed to motor vehicles and recommended for wilderness.
Bennett Barr	Moscow, ID		Latah County	Nez Perce	Entire West Fork Crooked River area should be closed to motor vehicles and recommended for wilderness.
Robert Pangle	Moscow, ID		Latah County	Nez Perce	Entire West Fork Crooked River area should be closed to motor vehicles and recommended for wilderness.

PUBLIC INVOLVEMENT AND COMMENTS

Table 2.5. Public comments specific to the Nez Perce National Forest.

Name	Comment Origin	Organization	Received By	National Forest	Summarized Comment
Bob Barry	Palouse, WA		Latah County	Nez Perce	Entire Goddard Creek area should be closed to motor vehicles and recommended for wilderness.
Bennett Barr	Moscow, ID		Latah County	Nez Perce	Entire Goddard Creek area should be closed to motor vehicles and recommended for wilderness.
David Hall	Moscow, ID		Latah County	Nez Perce	Entire Goddard Creek area should be closed to motor vehicles and recommended for wilderness.
Ashley Martins	Moscow, ID		Latah County	Nez Perce	Entire Goddard Creek area should be closed to motor vehicles and recommended for wilderness.
Garrett Clevenger	Moscow, ID		Latah County	Nez Perce	Entire Goddard Creek area should be closed to motor vehicles and recommended for wilderness.
Marc Lawrence	Potlatch, ID		Latah County	Nez Perce	Entire Goddard Creek area should be closed to motor vehicles and recommended for wilderness.
Robert Pangle	Moscow, ID		Latah County	Nez Perce	Entire Goddard Creek area should be closed to motor vehicles and recommended for wilderness.
		Friends of the Clearwater	Latah County	Nez Perce	Entire Goddard Creek area should be closed to motor vehicles and recommended for wilderness.
David Hall	Moscow, ID		Latah County	Nez Perce	Entire West Fork Crooked River area should be closed to motor vehicles and recommended for wilderness.
William Bonney	Moscow, ID		Latah County	Nez Perce	Entire West Fork Crooked River area should be closed to motor vehicles and recommended for wilderness.
Garrett Clevenger	Moscow, ID		Latah County	Nez Perce	Entire West Fork Crooked River area should be closed to motor vehicles and recommended for wilderness.
Marc Lawrence	Potlatch, ID		Latah County	Nez Perce	Entire Cove area should be closed to motor vehicles and recommended for wilderness.
Bennett Barr	Moscow, ID		Latah County	Nez Perce	Entire Cove area should be closed to motor vehicles and recommended for wilderness.
David Hall	Moscow, ID		Latah County	Nez Perce	Entire Cove area should be closed to motor vehicles and recommended for wilderness.
Ashley Martens	Moscow, ID		Latah County	Nez Perce	Entire Cove area should be closed to motor vehicles and recommended for wilderness.
Bob Berry	Palouse, WA		Latah County	Nez Perce	Entire Cove area should be closed to motor vehicles and recommended for wilderness.
Maria Theresa Maggi			Latah County	Nez Perce	Entire Cove area should be closed to motor vehicles and recommended for wilderness.
Marci Miller	Moscow, ID		Latah County	Nez Perce	Entire Cove area should be closed to motor vehicles and recommended for wilderness.
Will Boyd	Moscow, ID	Friends of the Clearwater	Latah County	Nez Perce	Entire Cove area should be closed to motor vehicles and recommended for wilderness.
Robert Pangle	Moscow, ID		Latah County	Nez Perce	Entire Cove area should be closed to motor vehicles and recommended for wilderness.
Garrett Clevenger	Moscow, ID		Latah County	Nez Perce	Entire Upper Bear Creek area should be closed to motor vehicles and recommended for wilderness.
Marc Lawrence	Potlatch, ID		Latah County	Nez Perce	Entire area Kelly Mountain area should be closed to motor vehicles and recommended for wilderness.

PUBLIC INVOLVEMENT AND COMMENTS

Table 2.5. Public comments specific to the Nez Perce National Forest.

Name	Comment Origin	Organization	Received By	National Forest	Summarized Comment
Garrett Clevenger	Moscow, ID		Latah County	Nez Perce	Entire area Kelly Mountain area should be closed to motor vehicles and recommended for wilderness.
Bennett Barr	Moscow, ID		Latah County	Nez Perce	Entire area Kelly Mountain area should be closed to motor vehicles and recommended for wilderness.
David Hall	Moscow, ID		Latah County	Nez Perce	Entire area Kelly Mountain area should be closed to motor vehicles and recommended for wilderness.
Ashley Martens	Moscow, ID		Latah County	Nez Perce	Entire area Kelly Mountain area should be closed to motor vehicles and recommended for wilderness.
Bob Berry	Palouse, WA		Latah County	Nez Perce	Entire area Kelly Mountain area should be closed to motor vehicles and recommended for wilderness.
Maria Theresa Maggi			Latah County	Nez Perce	Entire area Kelly Mountain area should be closed to motor vehicles and recommended for wilderness.
Marci Miller	Moscow, ID		Latah County	Nez Perce	Entire area Kelly Mountain area should be closed to motor vehicles and recommended for wilderness.
Will Boyd	Moscow, ID	Friends of the Clearwater	Latah County	Nez Perce	Entire area Kelly Mountain area should be closed to motor vehicles and recommended for wilderness.
		Friends of the Clearwater	Latah County	Nez Perce	Entire area Kelly Mountain area should be closed to motor vehicles and recommended for wilderness.
Bennett Barr	Moscow, ID		Latah County	Nez Perce	Entire Upper Bear Creek area should be closed to motor vehicles and recommended for wilderness.
Bob Berry	Palouse, WA		Latah County	Nez Perce	Entire Upper Bear Creek area should be closed to motor vehicles and recommended for wilderness.
Ashley Martens	Moscow, ID		Latah County	Nez Perce	Entire Upper Bear Creek area should be closed to motor vehicles and recommended for wilderness.
David Hall	Moscow, ID		Latah County	Nez Perce	Entire Upper Bear Creek area should be closed to motor vehicles and recommended for wilderness.
Robert Pangle	Moscow, ID		Latah County	Nez Perce	Entire Upper Bear Creek area should be closed to motor vehicles and recommended for wilderness.
Will Boyd	Moscow, ID		Latah County	Nez Perce	Entire Upper Bear Creek area should be closed to motor vehicles and recommended for wilderness.
William Bonney	Moscow, ID		Latah County	Nez Perce	Entire Upper Bear Creek area should be closed to motor vehicles and recommended for wilderness.
Empire Lumber, Bennett Forest Industries, Konkolville Lumber Co., Three Rivers Timber, Inc.	Kamiah, Id	Clearwater Timber Working Group	Latah County	Nez Perce	Recommends that all other roadless areas not specifically mentioned be open for timber management and motorized recreational use in their entirety.

Summary of comments on Specific Inventoried Roadless Areas on the Idaho Panhandle National Forest

The following tables are the summaries of comments received by Latah County that are specific to an Inventoried Roadless Area. All of the Inventoried Roadless Areas commented on in this section are located in the Idaho Panhandle National Forest.

PUBLIC INVOLVEMENT AND COMMENTS

Blacktail IRA

Table 2.6. Comments Received Specific to Blacktail IRA, Idaho Panhandle National Forest.

Name	Comment Origin	Organization	Received By	National Forest	Inventoried Roadless Area	Summarized Comment
David Hall	Moscow, ID		Latah County	Idaho Panhandle	Blacktail Mountain	Entire area should be closed to motor vehicles and recommended for wilderness.

Grandmother Mountain IRA

Table 2.7. Comments Received Specific to Grandmother Mountain IRA, Idaho Panhandle National Forest.

Name	Comment Origin	Organization	Received By	National Forest	Inventoried Roadless Area	Summarized Comment
David Hall	Moscow, ID		Latah County	Idaho Panhandle	Grandmother Mountain	Entire area should be closed to motor vehicles and recommended for wilderness.

Pinchot Butte IRA

Table 2.8. Comments Received Specific to Pinchot Butte IRA, Idaho Panhandle National Forest.

Name	Comment Origin	Organization	Received By	National Forest	Inventoried Roadless Area	Summarized Comment
David Hall	Moscow, ID		Latah County	Idaho Panhandle	Pinchot Butte Mountain	Entire area should be closed to motor vehicles and recommended for wilderness.

Summary of comments on Specific Inventoried Roadless Areas on the Clearwater National Forest

The following tables are the summaries of comments received by Latah County that are specific to an Inventoried Roadless Area. All of the Inventoried Roadless Areas commented on in this section are located in the Clearwater National Forest.

Bighorn - Weitas IRA

Table 2.9. Comments Received Specific to Bighorn - Weitas IRA, Clearwater National Forest.

Name	Comment Origin	Organization	Received By	National Forest	Inventoried Roadless Area	Summarized Comment
Marc Lawrence	Potlatch, ID		Latah County	Clearwater	Big Horn - Weitas	Entire area should be closed to motor vehicles and recommended for wilderness.
Denim Jochimsen	Moscow, ID		Latah County	Clearwater	Big Horn – Weitas	Entire area should be closed to motor vehicles and recommended for wilderness.
Bennett Barr	Moscow, ID		Latah County	Clearwater	Big Horn – Weitas	Entire area should be closed to motor vehicles and recommended for wilderness.
David Hall	Moscow, ID		Latah County	Clearwater	Big Horn - Weitas	Entire area should be closed to motor vehicles and recommended for wilderness.

PUBLIC INVOLVEMENT AND COMMENTS

Table 2.9. Comments Received Specific to Bighorn - Weitas IRA, Clearwater National Forest.

Name	Comment Origin	Organization	Received By	National Forest	Inventoried Roadless Area	Summarized Comment
Garrett Clevenger	Moscow, ID		Latah County	Clearwater	Big Horn – Weitas	Entire area should be closed to motor vehicles and recommended for wilderness.
Bob Berry	Palouse, Wa		Latah County	Clearwater	Big Horn – Weitas	Entire area should be closed to motor vehicles and recommended for wilderness.
Will Boyd	Moscow, ID	Friends of the Clearwater	Latah County	Clearwater	Big Horn - Weitas	Entire area should be closed to motor vehicles and recommended for wilderness.
Maria Theresa Magi	Moscow, ID		Latah County	Clearwater	Big Horn – Weitas	Entire area should be closed to motor vehicles and recommended for wilderness.
Robert Pangle	Moscow, ID		Latah County	Clearwater	Big Horn – Weitas	Entire area should be closed to motor vehicles and recommended for wilderness.
Ashley Martens	Moscow, ID		Latah County	Clearwater	Big Horn - Weitas	Entire area should be closed to motor vehicles and recommended for wilderness.
Jeanne Clothiaux	Moscow, ID		Latah County	Clearwater	Big Horn - Weitas	Entire area should be closed to motor vehicles and recommended for wilderness.
William Bonney	Moscow, ID		Latah County	Clearwater	Big Horn – Weitas	Entire area should be closed to motor vehicles and recommended for wilderness.

Hoodoo IRA

Table 2.10. Comments Received Specific to Hoodoo IRA, Clearwater National Forest.

Name	Comment Origin	Organization	Received By	National Forest	Inventoried Roadless Area	Summarized Comment
Marc Lawrence	Potlatch, ID		Latah County	Clearwater	Hoodoo	Entire area should be closed to motor vehicles and recommended for wilderness.
Bennett Barr	Moscow, ID		Latah County	Clearwater	Hoodoo	Entire area should be closed to motor vehicles and recommended for wilderness.
Randy & Vicki Baukol	Moscow, ID		Latah County	Clearwater	Hoodoo	Entire area should be closed to motor vehicles and recommended for wilderness.
David Hall	Moscow, ID		Latah County	Clearwater	Hoodoo	Entire area should be closed to motor vehicles and recommended for wilderness.
Bob Berry	Palouse, Wa		Latah County	Clearwater	Hoodoo	Entire area should be closed to motor vehicles and recommended for wilderness.
Maria Theresa Magi	Moscow, ID		Latah County	Clearwater	Hoodoo	Entire area should be closed to motor vehicles and recommended for wilderness.
Denim Jochimsen	Moscow, ID		Latah County	Clearwater	Hoodoo	Entire area should be closed to motor vehicles and recommended for wilderness.
Will Boyd	Moscow, ID	Friends of the Clearwater	Latah County	Clearwater	Hoodoo	Entire area should be closed to motor vehicles and recommended for wilderness.
Jeanne Clothiaux	Moscow, ID		Latah County	Clearwater	Hoodoo	Entire area should be closed to motor vehicles and recommended for wilderness.
Robert Pangle	Moscow, ID		Latah County	Clearwater	Hoodoo	Entire area should be closed to motor vehicles and recommended for wilderness.

PUBLIC INVOLVEMENT AND COMMENTS

Eldorado Creek IRA

Table 2.11. Comments Received Specific to Eldorado IRA, Clearwater National Forest.

Name	Comment Origin	Organization	Received By	National Forest	Inventoried Roadless Area	Summarized Comment
Marc Lawrence	Potlatch, ID		Latah County	Clearwater	Eldorado Creek	The entire area should be closed to motorized vehicles and recommended for wilderness.
Garrett Clevenger	Moscow, ID		Latah County	Clearwater	Eldorado Creek	The entire area should be closed to motorized vehicles and recommended for wilderness.
Bennett Barr	Moscow, ID		Latah County	Clearwater	Eldorado Creek	The entire area should be closed to motorized vehicles and should remain undeveloped.
William Bonney	Moscow, ID		Latah County	Clearwater	Eldorado Creek	The entire area should be closed to motorized vehicles and recommended for wilderness.
Ashley Martens	Moscow, ID		Latah County	Clearwater	Eldorado Creek	The entire area should be closed to motorized vehicles and recommended for wilderness.
Bob Berry	Palouse, Wa		Latah County	Clearwater	Eldorado Creek	The entire area should be closed to motorized vehicles and recommended for wilderness.
Maria Theresa Magi	Moscow, ID		Latah County	Clearwater	Eldorado Creek	The entire area should be closed to motorized vehicles and recommended for wilderness.
Marci Miller	Moscow, ID		Latah County	Clearwater	Eldorado Creek	The entire area should be closed to motorized vehicles and recommended for wilderness.
Will Boyd	Moscow, ID	Friends of the Clearwater	Latah County	Clearwater	Eldorado Creek	The entire area should be closed to motorized vehicles and recommended for wilderness.
Robert Pangle	Moscow, ID		Latah County	Clearwater	Eldorado Creek	The entire area should be closed to motorized vehicles and recommended for wilderness.

Lochsa Face IRA

Table 2.12. Comments Received Specific to Lochsa Face IRA, Clearwater National Forest.

Name	Comment Origin	Organization	Received By	National Forest	Inventoried Roadless Area	Summarized Comment
Marc Lawrence	Potlatch, ID		Latah County	Clearwater	Lochsa Face	Entire area should be closed to motor vehicles and recommended for wilderness.
Garrett Clevenger	Moscow, ID		Latah County	Clearwater	Lochsa Face	Entire area should be closed to motor vehicles and recommended for wilderness.
Bennett Barr	Moscow, ID		Latah County	Clearwater	Lochsa Face	Entire area should be closed to motor vehicles and recommended for wilderness.
Will Boyd	Moscow, ID	Friends of the Clearwater	Latah County	Clearwater	Lochsa Face	Entire area should be closed to motor vehicles and recommended for wilderness.
Ashley Martens	Moscow, ID		Latah County	Clearwater	Lochsa Face	Entire area should be closed to motor vehicles and recommended for wilderness.
Bob Berry	Palouse, Wa		Latah County	Clearwater	Lochsa Face	Entire area should be closed to motor vehicles and recommended for wilderness.
Robert Pangle	Moscow, ID		Latah County	Clearwater	Lochsa Face	Entire area should be closed to motor vehicles and recommended for wilderness.

PUBLIC INVOLVEMENT AND COMMENTS

Lolo Creek IRA

Table 2.13. Comments Received Specific to Lolo Creek IRA, Clearwater National Forest.

Name	Comment Origin	Organization	Received By	National Forest	Inventoried Roadless Area	Summarized Comment
Marc Lawrence	Potlatch, ID		Latah County	Clearwater	Lolo Creek	Entire area should be closed to motor vehicles and recommended for wilderness.
Garrett Clevenger	Moscow, ID		Latah County	Clearwater	Lolo Creek	Entire area should be closed to motor vehicles and recommended for wilderness.
Bennett Barr	Moscow, ID		Latah County	Clearwater	Lolo Creek	Entire area should be closed to motor vehicles and recommended for wilderness.
William Bonney	Moscow, ID		Latah County	Clearwater	Lolo Creek	Entire area should be closed to motor vehicles and recommended for wilderness.
Ashley Martens	Moscow, ID		Latah County	Clearwater	Lolo Creek	Entire area should be closed to motor vehicles and recommended for wilderness.
Bob Berry	Palouse, Wa		Latah County	Clearwater	Lolo Creek	Entire area should be closed to motor vehicles and recommended for wilderness.
Will Boyd	Moscow, ID	Friends of the Clearwater	Latah County	Clearwater	Lolo Creek	Entire area should be closed to motor vehicles and recommended for wilderness.
Robert Pangle	Moscow, ID		Latah County	Clearwater	Lolo Creek	Entire area should be closed to motor vehicles and recommended for wilderness.
		Friends of the Clearwater	Latah County	Clearwater	Lolo Creek	Anadromous fish use this stream and any road building in this steep area would probably be inappropriate.

Mallard - Larkins IRA

Table 2.14. Comments Received Specific to Mallard - Larkins IRA, Clearwater National Forest.

Name	Comment Origin	Organization	Received By	National Forest	Inventoried Roadless Area	Summarized Comment
Marc Lawrence	Potlatch, ID		Latah County	Clearwater	Mallard-Larkins	The entire area should be closed to motorized vehicles and recommended for wilderness.
Denim Jochimsen	Moscow, ID		Latah County	Clearwater	Mallard-Larkins	The entire area should be closed to motorized vehicles and recommended for wilderness.
Bennett Barr	Moscow, ID		Latah County	Clearwater	Mallard-Larkins	The entire area should be closed to motorized vehicles and recommended for wilderness.
David Hall	Moscow, ID		Latah County	Clearwater	Mallard-Larkins	The entire area should be closed to motorized vehicles and recommended for wilderness.
Randy Baukol	Moscow, ID		Latah County	Clearwater	Mallard-Larkins	Designate as wilderness. Close to all motorized vehicles.
Bob Berry	Palouse, Wa		Latah County	Clearwater	Mallard-Larkins	The entire area should be closed to motorized vehicles and recommended for wilderness.
Will Boyd	Moscow, ID	Friends of the Clearwater	Latah County	Clearwater	Mallard-Larkins	The entire area should be closed to motorized vehicles and recommended for wilderness.
Maria Theresa Magi	Moscow, ID		Latah County	Clearwater	Mallard-Larkins	The entire area should be closed to motorized vehicles and recommended for wilderness.
Robert Pangle	Moscow, ID		Latah County	Clearwater	Mallard-Larkins	The entire area should be closed to motorized vehicles and recommended for wilderness.

PUBLIC INVOLVEMENT AND COMMENTS

Table 2.14. Comments Received Specific to Mallard - Larkins IRA, Clearwater National Forest.

Name	Comment Origin	Organization	Received By	National Forest	Inventoried Roadless Area	Summarized Comment
Jeanne Clothiaux	Moscow, ID		Latah County	Clearwater	Mallard-Larkins	The entire area should be closed to motorized vehicles and recommended for wilderness.
Shawn Ringo	Moscow, ID		Latah County	Clearwater	Mallard-Larkins	The entire area should be closed to motorized vehicles and recommended for wilderness.

Meadow Creek – Upper North Fork IRA

Table 2.15. Comments Received Specific to Meadow Creek – Upper North Fork IRA, Clearwater National Forest.

Name	Comment Origin	Organization	Received By	National Forest	Inventoried Roadless Area	Summarized Comment
Marc Lawrence	Potlatch, ID		Latah County	Clearwater	Meadow Creek – Upper North Fork	Entire area should be closed to motor vehicles to protect fish and wildlife and managed as wilderness.
Denim Jochimsen	Moscow, ID		Latah County	Clearwater	Meadow Creek – Upper North Fork	Entire area should be closed to motor vehicles to protect fish and wildlife and managed as wilderness.
Bennett Barr	Moscow, ID		Latah County	Clearwater	Meadow Creek – Upper North Fork	Entire area should be closed to motor vehicles to protect fish and wildlife and managed as wilderness.
David Hall	Moscow, ID		Latah County	Clearwater	Meadow Creek – Upper North Fork	Entire area should be closed to motor vehicles to protect fish and wildlife and managed as wilderness.
Bob Berry	Palouse, Wa		Latah County	Clearwater	Meadow Creek – Upper North Fork	Entire area should be closed to motor vehicles to protect fish and wildlife and managed as wilderness.
		Friends of the Clearwater	Latah County	Clearwater	Meadow Creek – Upper North Fork	Entire area should be closed to motor vehicles to protect fish and wildlife and managed as wilderness.
Maria Theresa Magi	Moscow, ID		Latah County	Clearwater	Meadow Creek – Upper North Fork	Entire area should be closed to motor vehicles to protect fish and wildlife and managed as wilderness.
Robert Pangle	Moscow, ID		Latah County	Clearwater	Meadow Creek – Upper North Fork	Entire area should be closed to motor vehicles to protect fish and wildlife and managed as wilderness.
Shawn Ringo	Moscow, ID		Latah County	Clearwater	Meadow Creek – Upper North Fork	Entire area should be closed to motor vehicles to protect fish and wildlife and managed as wilderness.
Jeanne Clothiaux	Moscow, ID		Latah County	Clearwater	Meadow Creek – Upper North Fork	Entire area should be closed to motor vehicles to protect fish and wildlife and managed as wilderness.
William Bonney	Moscow, ID		Latah County	Clearwater	Meadow Creek – Upper North Fork	Entire area should be closed to motor vehicles to protect fish and wildlife and managed as wilderness.

PUBLIC INVOLVEMENT AND COMMENTS

Moose Mountain IRA

Table 2.16. Comments Received Specific to Moose Mountain IRA, Clearwater National Forest.

Name	Comment Origin	Organization	Received By	National Forest	Inventoried Roadless Area	Summarized Comment
Marc Lawrence	Potlatch, ID		Latah County	Clearwater	Moose Mountain	The entire area should be closed to motorized vehicles and recommended for wilderness.
Garrett Clevenger	Moscow, ID		Latah County	Clearwater	Moose Mountain	The entire area should be closed to motorized vehicles and recommended for wilderness.
Bennett Barr	Moscow, ID		Latah County	Clearwater	Moose Mountain	The entire area should be closed to motorized vehicles and recommended for wilderness.
William Bonney	Moscow, ID		Latah County	Clearwater	Moose Mountain	The entire area should be closed to motorized vehicles and recommended for wilderness.
David Hall	Moscow, ID		Latah County	Clearwater	Moose Mountain	The entire area should be closed to motorized vehicles and recommended for wilderness.
Bob Berry	Palouse, Wa		Latah County	Clearwater	Moose Mountain	The entire area should be closed to motorized vehicles and recommended for wilderness.
Maria Theresa Magi	Moscow, ID		Latah County	Clearwater	Moose Mountain	The entire area should be closed to motorized vehicles and recommended for wilderness.
Denim Jochimsen	Moscow, ID		Latah County	Clearwater	Moose Mountain	The entire area should be closed to motorized vehicles and recommended for wilderness.
Will Boyd	Moscow, ID	Friends of the Clearwater	Latah County	Clearwater	Moose Mountain	The entire area should be closed to motorized vehicles and recommended for wilderness.
Jeanne Clothiaux	Moscow, ID		Latah County	Clearwater	Moose Mountain	The entire area should be closed to motorized vehicles and recommended for wilderness.
Robert Pangle	Moscow, ID		Latah County	Clearwater	Moose Mountain	The entire area should be closed to motorized vehicles and recommended for wilderness.

North Fork Spruce – White Sand IRA

Table 2.17. Comments Received Specific to North Fork Spruce – White Sand IRA, Clearwater National Forest.

Name	Comment Origin	Organization	Received By	National Forest	Inventoried Roadless Area	Summarized Comment
Marc Lawrence	Potlatch, ID		Latah County	Clearwater	North Fork Spruce – White Sand	Entire area should be closed to motor vehicles and recommended for wilderness.
Garrett Clevenger	Moscow, ID		Latah County	Clearwater	North Fork Spruce – White Sand	Entire area should be closed to motor vehicles and recommended for wilderness.
Bennett Barr	Moscow, ID		Latah County	Clearwater	North Fork Spruce – White Sand	Entire area should be closed to motor vehicles and recommended for wilderness.
David Hall	Moscow, ID		Latah County	Clearwater	North Fork Spruce – White Sand	Entire area should be closed to motor vehicles and recommended for wilderness.
Ashley Martens	Moscow, ID		Latah County	Clearwater	North Fork Spruce – White Sand	Entire area should be closed to motor vehicles and recommended for wilderness.
Robert Pangle	Moscow, ID		Latah County	Clearwater	North Fork Spruce – White Sand	Entire area should be closed to motor vehicles and recommended for wilderness.
Bob Berry	Palouse, Wa		Latah County	Clearwater	North Fork Spruce – White Sand	Entire area should be closed to motor vehicles and recommended for wilderness.

PUBLIC INVOLVEMENT AND COMMENTS

Table 2.17. Comments Received Specific to North Fork Spruce – White Sand IRA, Clearwater National Forest.

Name	Comment Origin	Organization	Received By	National Forest	Inventoried Roadless Area	Summarized Comment
William Bonney	Moscow, ID		Latah County	Clearwater	North Fork Spruce – White Sand	Entire area should be closed to motor vehicles and recommended for wilderness.
Maria Theresa Magi	Moscow, ID		Latah County	Clearwater	North Fork Spruce – White Sand	Entire area should be closed to motor vehicles and recommended for wilderness.

North Lochsa Slope IRA

Table 2.18. Comments Received Specific to North Lochsa Slope IRA, Clearwater National Forest.

Name	Comment Origin	Organization	Received By	National Forest	Inventoried Roadless Area	Summarized Comment
Marc Lawrence	Potlatch, ID		Latah County	Clearwater	North Lochsa Slope	Entire area should be closed to motor vehicles and recommended for wilderness.
Garrett Clevenger	Moscow, ID		Latah County	Clearwater	North Lochsa Slope	Entire area should be closed to motor vehicles and recommended for wilderness.
Bennett Barr	Moscow, ID		Latah County	Clearwater	North Lochsa Slope	Entire area should be closed to motor vehicles and recommended for wilderness.
Will Boyd	Moscow, ID		Latah County	Clearwater	North Lochsa Slope	Entire area should be closed to motor vehicles and recommended for wilderness.
Ashley Martens	Moscow, ID		Latah County	Clearwater	North Lochsa Slope	Entire area should be closed to motor vehicles and recommended for wilderness.
Bob Berry	Palouse, Wa		Latah County	Clearwater	North Lochsa Slope	Entire area should be closed to motor vehicles and recommended for wilderness.
Robert Pangle	Moscow, ID		Latah County	Clearwater	North Lochsa Slope	Entire area should be closed to motor vehicles and recommended for wilderness.
David Hall	Moscow, ID		Latah County	Clearwater	North Lochsa Slope	Entire area should be closed to motor vehicles and recommended for wilderness.

Pot Mountain IRA

Table 2.19. Comments Received Specific to Pot Mountain IRA, Clearwater National Forest.

Name	Comment Origin	Organization	Received By	National Forest	Inventoried Roadless Area	Summarized Comment
Marc Lawrence	Potlatch, ID		Latah County	Clearwater	Pot Mountain	The entire area should be closed to motorized vehicles and recommended for wilderness.
Garrett Clevenger	Moscow, ID		Latah County	Clearwater	Pot Mountain	The entire area should be closed to motorized vehicles and recommended for wilderness.
Bennett Barr	Moscow, ID		Latah County	Clearwater	Pot Mountain	The entire area should be closed to motorized vehicles and recommended for wilderness.
William Bonney	Moscow, ID		Latah County	Clearwater	Pot Mountain	The entire area should be closed to motorized vehicles and recommended for wilderness.
David Hall	Moscow, ID		Latah County	Clearwater	Pot Mountain	The entire area should be closed to motorized vehicles and recommended for wilderness.
Bob Berry	Palouse, Wa		Latah County	Clearwater	Pot Mountain	The entire area should be closed to motorized vehicles and recommended for wilderness.

PUBLIC INVOLVEMENT AND COMMENTS

Table 2.19. Comments Received Specific to Pot Mountain IRA, Clearwater National Forest.

Name	Comment Origin	Organization	Received By	National Forest	Inventoried Roadless Area	Summarized Comment
Maria Theresa Magi	Moscow, ID		Latah County	Clearwater	Pot Mountain	The entire area should be closed to motorized vehicles and recommended for wilderness.
Denim Jochimsen	Moscow, ID		Latah County	Clearwater	Pot Mountain	The entire area should be closed to motorized vehicles and recommended for wilderness.
Will Boyd	Moscow, ID	Friends of the Clearwater	Latah County	Clearwater	Pot Mountain	The entire area should be closed to motorized vehicles and recommended for wilderness.
Jeanne Clothiaux	Moscow, ID		Latah County	Clearwater	Pot Mountain	The entire area should be closed to motorized vehicles and recommended for wilderness.
Robert Pangle	Moscow, ID		Latah County	Clearwater	Pot Mountain	The entire area should be closed to motorized vehicles and recommended for wilderness.

Rawhide IRA

Table 2.20. Comments Received Specific to Rawhide IRA, Clearwater National Forest.

Name	Comment Origin	Organization	Received By	National Forest	Inventoried Roadless Area	Summarized Comment
Marc Lawrence	Potlatch, ID		Latah County	Clearwater	Rawhide	The entire area should be closed to motorized vehicles and recommended for wilderness.
Denim Jochimsen	Moscow, ID		Latah County	Clearwater	Rawhide	The entire area should be closed to motorized vehicles and recommended for wilderness.
Bennett Barr	Moscow, ID		Latah County	Clearwater	Rawhide	The entire area should be closed to motorized vehicles and recommended for wilderness.
David Hall	Moscow, ID		Latah County	Clearwater	Rawhide	The entire area should be closed to motorized vehicles and recommended for wilderness.
Garrett Clevenger	Moscow, ID		Latah County	Clearwater	Rawhide	The entire area should be closed to motorized vehicles and recommended for wilderness.
Bob Berry	Palouse, Wa		Latah County	Clearwater	Rawhide	The entire area should be closed to motorized vehicles and recommended for wilderness.
Will Boyd	Moscow, ID	Friends of the Clearwater	Latah County	Clearwater	Rawhide	The entire area should be closed to motorized vehicles and recommended for wilderness.
Maria Theresa Magi	Moscow, ID		Latah County	Clearwater	Rawhide	The entire area should be closed to motorized vehicles and recommended for wilderness.
Robert Pangle	Moscow, ID		Latah County	Clearwater	Rawhide	The entire area should be closed to motorized vehicles and recommended for wilderness.
		Friends of the Clearwater	Latah County	Clearwater	Rawhide	The entire area should be closed to motorized vehicles and recommended for wilderness.
Jeanne Clothiaux	Moscow, ID		Latah County	Clearwater	Rawhide	The entire area should be closed to motorized vehicles and recommended for wilderness.
William Bonney	Moscow, ID		Latah County	Clearwater	Rawhide	The entire area should be closed to motorized vehicles and recommended for wilderness.

PUBLIC INVOLVEMENT AND COMMENTS

Siwash IRA

Table 2.21. Comments Received Specific to Siwash IRA, Clearwater National Forest.

Name	Comment Origin	Organization	Received By	National Forest	Inventoried Roadless Area	Summarized Comment
Marc Lawrence	Potlatch, ID		Latah County	Clearwater	Siwash	The entire area should be closed to motorized vehicles and recommended for wilderness.
Garrett Clevenger	Moscow, ID		Latah County	Clearwater	Siwash	The entire area should be closed to motorized vehicles and recommended for wilderness.
Bennett Barr	Moscow, ID		Latah County	Clearwater	Siwash	The entire area should be closed to motorized vehicles and recommended for wilderness.
William Bonney	Moscow, ID		Latah County	Clearwater	Siwash	The entire area should be closed to motorized vehicles and recommended for wilderness.
David Hall	Moscow, ID		Latah County	Clearwater	Siwash	The entire area should be closed to motorized vehicles and recommended for wilderness.
Bob Berry	Palouse, Wa		Latah County	Clearwater	Siwash	The entire area should be closed to motorized vehicles and recommended for wilderness.
Maria Theresa Magi	Moscow, ID		Latah County	Clearwater	Siwash	The entire area should be closed to motorized vehicles and recommended for wilderness.
Denim Jochimsen	Moscow, ID		Latah County	Clearwater	Siwash	The entire area should be closed to motorized vehicles and recommended for wilderness.
		Friends of the Clearwater	Latah County	Clearwater	Siwash	The entire area should be closed to motorized vehicles and recommended for wilderness.
Jeanne Clothiaux	Moscow, ID		Latah County	Clearwater	Siwash	The entire area should be closed to motorized vehicles and recommended for wilderness.
Robert Pangle	Moscow, ID		Latah County	Clearwater	Siwash	The entire area should be closed to motorized vehicles and recommended for wilderness.

Sneakfoot Meadows IRA

Table 2.22. Comments Received Specific to Sneakfoot Meadows IRA, Clearwater National Forest.

Name	Comment Origin	Organization	Received By	National Forest	Inventoried Roadless Area	Summarized Comment
Marc Lawrence	Potlatch, ID		Latah County	Clearwater	Sneakfoot Meadows	Entire area should be closed to motor vehicles and recommended for wilderness.
Garrett Clevenger	Moscow, ID		Latah County	Clearwater	Sneakfoot Meadows	Entire area should be closed to motor vehicles and recommended for wilderness.
Bennett Barr	Moscow, ID		Latah County	Clearwater	Sneakfoot Meadows	Entire area should be closed to motor vehicles and recommended for wilderness.
William Bonney	Moscow, ID		Latah County	Clearwater	Sneakfoot Meadows	Entire area should be closed to motor vehicles and recommended for wilderness.
Ashley Martens	Moscow, ID		Latah County	Clearwater	Sneakfoot Meadows	Entire area should be closed to motor vehicles and recommended for wilderness.
Bob Berry	Palouse, Wa		Latah County	Clearwater	Sneakfoot Meadows	Entire area should be closed to motor vehicles and recommended for wilderness.
Robert Pangle	Moscow, ID		Latah County	Clearwater	Sneakfoot Meadows	Entire area should be closed to motor vehicles and recommended for wilderness.

PUBLIC INVOLVEMENT AND COMMENTS

Weir – Post Office Creek IRA

Table 2.23. Comments Received Specific to Weir - Post Office Creek IRA, Clearwater National Forest.

Name	Comment Origin	Organization	Received By	National Forest	Inventoried Roadless Area	Summarized Comment
Marc Lawrence	Potlatch, ID		Latah County	Clearwater	Weir – Post Office Creek	Entire area should be closed to motor vehicles to protect fish and wildlife and managed as wilderness.
Garrett Clevenger	Moscow, ID		Latah County	Clearwater	Weir – Post Office Creek	Entire area should be closed to motor vehicles and recommended for wilderness.
Robert Pangle	Moscow, ID		Latah County	Clearwater	Weir – Post Office Creek	Entire area should be closed to motor vehicles and recommended for wilderness.
Bennett Barr	Moscow, ID		Latah County	Clearwater	Weir – Post Office Creek	Entire area should be closed to motor vehicles and recommended for wilderness.
William Bonney	Moscow, ID		Latah County	Clearwater	Weir – Post Office Creek	Entire area should be closed to motor vehicles and recommended for wilderness.
Ashley Martens	Moscow, ID		Latah County	Clearwater	Weir – Post Office Creek	Entire area should be closed to motor vehicles and recommended for wilderness.
Bob Berry	Palouse, Wa		Latah County	Clearwater	Weir – Post Office Creek	Entire area should be closed to motor vehicles to protect fish and wildlife and managed as wilderness.

Summary of comments on Specific Inventoried Roadless Areas on the Nez Perce National Forest

The following tables are the summaries of comments received by Latah County that are specific to an Inventoried Roadless Area. All of the Inventoried Roadless Areas commented on in this section are located in the Nez Perce National Forest.

Clear Creek IRA

Table 2.24. Comments Received Specific to Clear Creek IRA, Nez Perce National Forest.

Name	Comment Origin	Organization	Received By	National Forest	Inventoried Roadless Area	Summarized Comment
Lynne Nelson	Palouse, Wa		Latah County	Nez Perce	Clear Creek	Entire area should be closed to motor vehicles and recommended for wilderness.
Marc Lawrence	Potlatch, ID		Latah County	Nez Perce	Clear Creek	The entire area should be closed to motor vehicles and be considered for wilderness in the forest plan.
Garrett Clevenger	Moscow, ID		Latah County	Nez Perce	Clear Creek	The entire area should be closed to motor vehicles and be considered for wilderness in the forest plan.
Bennett Barr	Moscow, ID		Latah County	Nez Perce	Clear Creek	The entire area should be closed to motor vehicles and be considered for wilderness in the forest plan.

PUBLIC INVOLVEMENT AND COMMENTS

Table 2.24. Comments Received Specific to Clear Creek IRA, Nez Perce National Forest.

Name	Comment Origin	Organization	Received By	National Forest	Inventoried Roadless Area	Summarized Comment
Robert Pangle	Moscow, ID		Latah County	Nez Perce	Clear Creek	Entire area should be closed to motor vehicles and recommended for wilderness.
Ashley Martens	Moscow, ID		Latah County	Nez Perce	Clear Creek	The entire area should be closed to motor vehicles and be considered for wilderness in the forest plan.

Dixie Summit – Nut Hill IRA

Table 2.25. Comments Received Specific to Dixie Summit – Nut Hill IRA, Nez Perce National Forest.

Name	Comment Origin	Organization	Received By	National Forest	Inventoried Roadless Area	Summarized Comment
Marc Lawrence	Potlatch, ID		Latah County	Nez Perce	Dixie Summitt-Nut Hill	The entire area should be closed to motor vehicles and be considered for wilderness in the forest plan.
Garrett Clevenger	Moscow, ID		Latah County	Nez Perce	Dixie Summitt-Nut Hill	The entire area should be closed to motor vehicles and be considered for wilderness in the forest plan.
Bennett Barr	Moscow, ID		Latah County	Nez Perce	Dixie Summitt-Nut Hill	The entire area should be closed to motor vehicles and be considered for wilderness in the forest plan.
David Hall	Moscow, ID		Latah County	Nez Perce	Dixie Summitt-Nut Hill	The entire area should be closed to motor vehicles and be considered for wilderness in the forest plan.
Ashley Martens	Moscow, ID		Latah County	Nez Perce	Dixie Summitt-Nut Hill	The entire area should be closed to motor vehicles and be considered for wilderness in the forest plan.

East Meadow Creek IRA

Table 2.26. Comments Received Specific to East Meadow Creek IRA, Nez Perce National Forest.

Name	Comment Origin	Organization	Received By	National Forest	Inventoried Roadless Area	Summarized Comment
Marc Lawrence	Potlatch, ID		Latah County	Nez Perce	East Meadow Creek	Entire area should be closed to motor vehicles and recommended for wilderness.
Garrett Clevenger	Moscow, ID		Latah County	Nez Perce	East Meadow Creek	Entire area should be closed to motor vehicles and recommended for wilderness.
Bennett Barr	Moscow, ID		Latah County	Nez Perce	East Meadow Creek	Entire area should be closed to motor vehicles and recommended for wilderness.
David Hall	Moscow, ID		Latah County	Nez Perce	East Meadow Creek	Entire area should be closed to motor vehicles and recommended for wilderness.
Robert Pangle	Moscow, ID		Latah County	Nez Perce	East Meadow Creek	Entire area should be closed to motor vehicles and recommended for wilderness.
Ashley Martens	Moscow, ID		Latah County	Nez Perce	East Meadow Creek	Entire area should be closed to motor vehicles and recommended for wilderness.

PUBLIC INVOLVEMENT AND COMMENTS

Table 2.26. Comments Received Specific to East Meadow Creek IRA, Nez Perce National Forest.

Name	Comment Origin	Organization	Received By	National Forest	Inventoried Roadless Area	Summarized Comment
Bob Berry	Palouse, Wa		Latah County	Nez Perce	East Meadow Creek	Entire area should be closed to motor vehicles and recommended for wilderness.
William Bonney	Moscow, ID		Latah County	Nez Perce	East Meadow Creek	Entire area should be closed to motor vehicles and recommended for wilderness.

John Day IRA

Table 2.27. Comments Received Specific to John Day IRA, Nez Perce National Forest.

Name	Comment Origin	Organization	Received By	National Forest	Inventoried Roadless Area	Summarized Comment
Marc Lawrence	Potlatch, ID		Latah County	Nez Perce	John Day	The entire area should be closed to motor vehicles and be considered for wilderness in the forest plan.
Garrett Clevenger	Moscow, ID		Latah County	Nez Perce	John Day	The entire area should be closed to motor vehicles and be considered for wilderness in the forest plan.
Bennett Barr	Moscow, ID		Latah County	Nez Perce	John Day	The entire area should be closed to motor vehicles and be considered for wilderness in the forest plan.
Robert Pangle	Moscow, ID		Latah County	Nez Perce	John Day	Entire area should be closed to motor vehicles and recommended for wilderness.
David Hall	Moscow, ID		Latah County	Nez Perce	John Day	The entire area should be closed to motor vehicles and be considered for wilderness in the forest plan.
Ashley Martens	Moscow, ID		Latah County	Nez Perce	John Day	The entire area should be closed to motor vehicles and be considered for wilderness in the forest plan.
Bob Berry	Palouse, Wa		Latah County	Nez Perce	John Day	The entire area should be closed to motor vehicles and be considered for wilderness in the forest plan.

Lick Point IRA

Table 2.28. Comments Received Specific to Lick Point IRA, Nez Perce National Forest.

Name	Comment Origin	Organization	Received By	National Forest	Inventoried Roadless Area	Summarized Comment
Marc Lawrence	Potlatch, ID		Latah County	Nez Perce	Lick Point	Entire area should be closed to motor vehicles and recommended for wilderness.
Garrett Clevenger	Moscow, ID		Latah County	Nez Perce	Lick Point	Entire area should be closed to motor vehicles and recommended for wilderness.
Bennett Barr	Moscow, ID		Latah County	Nez Perce	Lick Point	Entire area should be closed to motor vehicles and recommended for wilderness.
David Hall	Moscow, ID		Latah County	Nez Perce	Lick Point	Entire area should be closed to motor vehicles and recommended for wilderness.

PUBLIC INVOLVEMENT AND COMMENTS

Table 2.28. Comments Received Specific to Lick Point IRA, Nez Perce National Forest.

Name	Comment Origin	Organization	Received By	National Forest	Inventoried Roadless Area	Summarized Comment
Ashley Martens	Moscow, ID		Latah County	Nez Perce	Lick Point	Entire area should be closed to motor vehicles and recommended for wilderness.
Bob Berry	Palouse, Wa		Latah County	Nez Perce	Lick Point	Entire area should be closed to motor vehicles and recommended for wilderness.
Robert Pangle	Moscow, ID		Latah County	Nez Perce	Lick Point	Entire area should be closed to motor vehicles and recommended for wilderness.
William Bonney	Moscow, ID		Latah County	Nez Perce	Lick Point	Entire area should be closed to motor vehicles and recommended for wilderness.

Little Slate Creek IRA

Table 2.29. Comments Received Specific to Little Slate Creek IRA, Nez Perce National Forest.

Name	Comment Origin	Organization	Received By	National Forest	Inventoried Roadless Area	Summarized Comment
Marc Lawrence	Potlatch, ID		Latah County	Nez Perce	Little Slate Creek	Entire area should be closed to motor vehicles and recommended for wilderness.
Garrett Clevenger	Moscow, ID		Latah County	Nez Perce	Little Slate Creek	Entire area should be closed to motor vehicles and recommended for wilderness.
Bennett Barr	Moscow, ID		Latah County	Nez Perce	Little Slate Creek	Entire area should be closed to motor vehicles and recommended for wilderness.
David Hall	Moscow, ID		Latah County	Nez Perce	Little Slate Creek	Entire area should be closed to motor vehicles and recommended for wilderness.
Ashley Martens	Moscow, ID		Latah County	Nez Perce	Little Slate Creek	Entire area should be closed to motor vehicles and recommended for wilderness.
Bob Berry	Palouse, Wa		Latah County	Nez Perce	Little Slate Creek	Entire area should be closed to motor vehicles and recommended for wilderness.
William Bonney	Moscow, ID		Latah County	Nez Perce	Little Slate Creek	Entire area should be closed to motor vehicles and recommended for wilderness.
Will Boyd	Moscow, ID	Friends of the Clearwater	Latah County	Nez Perce	Little Slate Creek	Entire area should be closed to motor vehicles and recommended for wilderness.
Robert Pangle	Moscow, ID		Latah County	Nez Perce	Little Slate Creek	Entire area should be closed to motor vehicles and recommended for wilderness.
		Friends of the Clearwater	Latah County	Nez Perce	Little Slate Creek	Entire area should be closed to motor vehicles and recommended for wilderness.

Mallard IRA

Table 2.30. Comments Received Specific to Mallard IRA, Nez Perce National Forest.

Name	Comment Origin	Organization	Received By	National Forest	Inventoried Roadless Area	Summarized Comment
Marc Lawrence	Potlatch, ID		Latah County	Nez Perce	Mallard	Entire area should be closed to motor vehicles and recommended for wilderness.
Garrett Clevenger	Moscow, ID		Latah County	Nez Perce	Mallard	Entire area should be closed to motor vehicles and recommended for wilderness.

PUBLIC INVOLVEMENT AND COMMENTS

Table 2.30. Comments Received Specific to Mallard IRA, Nez Perce National Forest.

Name	Comment Origin	Organization	Received By	National Forest	Inventoried Roadless Area	Summarized Comment
Bennett Barr	Moscow, ID		Latah County	Nez Perce	Mallard	Entire area should be closed to motor vehicles and recommended for wilderness.
Bob Berry	Palouse, WA		Latah County	Nez Perce	Mallard	Entire area should be closed to motor vehicles and recommended for wilderness.
Ashley Martens	Moscow, ID		Latah County	Nez Perce	Mallard	Entire area should be closed to motor vehicles and recommended for wilderness.
David Hall	Moscow, ID		Latah County	Nez Perce	Mallard	Entire area should be closed to motor vehicles and recommended for wilderness.
Robert Pangle	Moscow, ID		Latah County	Nez Perce	Mallard	Entire area should be closed to motor vehicles and recommended for wilderness.
Maria Theresa Maggi			Latah County	Nez Perce	Mallard	Entire area should be closed to motor vehicles and recommended for wilderness.

Middle Fork Face IRA

Table 2.31. Comments Received Specific to Middle Fork Face IRA, Nez Perce National Forest.

Name	Comment Origin	Organization	Received By	National Forest	Inventoried Roadless Area	Summarized Comment
Lynne Nelson	Palouse, Wa		Latah County	Nez Perce	Middle Fork Face	Entire area should be closed to motor vehicles and recommended for wilderness.
Marc Lawrence	Potlatch, ID		Latah County	Nez Perce	Middle Fork Face	Entire area should be closed to motor vehicles and recommended for wilderness.
Garrett Clevenger	Moscow, ID		Latah County	Nez Perce	Middle Fork Face	Entire area should be closed to motor vehicles and recommended for wilderness.
Bennett Barr	Moscow, ID		Latah County	Nez Perce	Middle Fork Face	Entire area should be closed to motor vehicles and recommended for wilderness.
David Hall	Moscow, ID		Latah County	Nez Perce	Middle Fork Face	Entire area should be closed to motor vehicles and recommended for wilderness.
Ashley Martens	Moscow, ID		Latah County	Nez Perce	Middle Fork Face	Entire area should be closed to motor vehicles and recommended for wilderness.
Robert Pangle	Moscow, ID		Latah County	Nez Perce	Middle Fork Face	Entire area should be closed to motor vehicles and recommended for wilderness.
Bob Berry	Palouse, Wa		Latah County	Nez Perce	Middle Fork Face	Entire area should be closed to motor vehicles and recommended for wilderness.
William Bonney	Moscow, ID		Latah County	Nez Perce	Middle Fork Face	Entire area should be closed to motor vehicles and recommended for wilderness.

North Fork Slate Creek IRA

Table 2.32. Comments Received Specific to North Fork Slate Creek IRA, Nez Perce National Forest.

Name	Comment Origin	Organization	Received By	National Forest	Inventoried Roadless Area	Summarized Comment
Marc Lawrence	Potlatch, ID		Latah County	Nez Perce	North Fork Slate Creek	Entire area should be closed to motor vehicles and recommended for wilderness.

PUBLIC INVOLVEMENT AND COMMENTS

Table 2.32. Comments Received Specific to North Fork Slate Creek IRA, Nez Perce National Forest.

Name	Comment Origin	Organization	Received By	National Forest	Inventoried Roadless Area	Summarized Comment
Garrett Clevenger	Moscow, ID		Latah County	Nez Perce	North Fork Slate Creek	Entire area should be closed to motor vehicles and recommended for wilderness.
Bennett Barr	Moscow, ID		Latah County	Nez Perce	North Fork Slate Creek	Entire area should be closed to motor vehicles and recommended for wilderness.
David Hall	Moscow, ID		Latah County	Nez Perce	North Fork Slate Creek	Entire area should be closed to motor vehicles and recommended for wilderness.
Ashley Martens	Moscow, ID		Latah County	Nez Perce	North Fork Slate Creek	Entire area should be closed to motor vehicles and recommended for wilderness.
Bob Berry	Palouse, Wa		Latah County	Nez Perce	North Fork Slate Creek	Entire area should be closed to motor vehicles and recommended for wilderness.
Robert Pangle	Moscow, ID		Latah County	Nez Perce	North Fork Slate Creek	Entire area should be closed to motor vehicles and recommended for wilderness.
Maria Theresa Maggi			Latah County	Nez Perce	North Fork Slate Creek	Entire area should be closed to motor vehicles and recommended for wilderness.
William Bonney	Moscow, ID		Latah County	Nez Perce	North Fork Slate Creek	Entire area should be closed to motor vehicles and recommended for wilderness.

O'Hara – Falls Creek IRA

Table 2.33. Comments Received Specific to O'Hara – Falls Creek IRA, Nez Perce National Forest.

Name	Comment Origin	Organization	Received By	National Forest	Inventoried Roadless Area	Summarized Comment
Marc Lawrence	Potlatch, ID		Latah County	Nez Perce	O'Hara Falls Creek	Entire area should be closed to motor vehicles and recommended for wilderness.
Garrett Clevenger	Moscow, ID		Latah County	Nez Perce	O'Hara Falls Creek	Entire area should be closed to motor vehicles and recommended for wilderness.
Bennett Barr	Moscow, ID		Latah County	Nez Perce	O'Hara Falls Creek	Entire area should be closed to motor vehicles and recommended for wilderness.
David Hall	Moscow, ID		Latah County	Nez Perce	O'Hara Falls Creek	Entire area should be closed to motor vehicles and recommended for wilderness.
Ashley Martens	Moscow, ID		Latah County	Nez Perce	O'Hara Falls Creek	Entire area should be closed to motor vehicles and recommended for wilderness.
Bob Berry	Palouse, Wa		Latah County	Nez Perce	O'Hara Falls Creek	Entire area should be closed to motor vehicles and recommended for wilderness.
Robert Pangle	Moscow, ID		Latah County	Nez Perce	O'Hara Falls Creek	Entire area should be closed to motor vehicles and recommended for wilderness.
William Bonney	Moscow, ID		Latah County	Nez Perce	O'Hara Falls Creek	Entire area should be closed to motor vehicles and recommended for wilderness.

PUBLIC INVOLVEMENT AND COMMENTS

Rackliff - Gedney IRA

Table 2.34. Comments Received Specific to Rackliff - Gedney IRA, Nez Perce National Forest.

Name	Comment Origin	Organization	Received By	National Forest	Inventoried Roadless Area	Summarized Comment
Marc Lawrence	Potlatch, ID		Latah County	Nez Perce	Rackliff- Gedney	Entire area should be closed to motor vehicles and recommended for wilderness.
Garrett Clevenger	Moscow, ID		Latah County	Nez Perce	Rackliff- Gedney	Entire area should be closed to motor vehicles and recommended for wilderness.
Bennett Barr	Moscow, ID		Latah County	Nez Perce	Rackliff- Gedney	Entire area should be closed to motor vehicles and recommended for wilderness.
Robert Pangle	Moscow, ID		Latah County	Nez Perce	Rackliff- Gedney	Entire area should be closed to motor vehicles and recommended for wilderness.
David Hall	Moscow, ID		Latah County	Nez Perce	Rackliff- Gedney	Entire area should be closed to motor vehicles and recommended for wilderness.
Ashley Martens	Moscow, ID		Latah County	Nez Perce	Rackliff- Gedney	Entire area should be closed to motor vehicles and recommended for wilderness.

Rapid River IRA

Table 2.35. Comments Received Specific to Rapid River IRA, Nez Perce National Forest.

Name	Comment Origin	Organization	Received By	National Forest	Inventoried Roadless Area	Summarized Comment
Marc Lawrence	Potlatch, ID		Latah County	Nez Perce	Rapid River	Entire area should be closed to motor vehicles and recommended for wilderness.
Garrett Clevenger	Moscow, ID		Latah County	Nez Perce	Rapid River	Entire area should be closed to motor vehicles and recommended for wilderness.
Bennett Barr	Moscow, ID		Latah County	Nez Perce	Rapid River	Entire area should be closed to motor vehicles and recommended for wilderness.
Bob Berry	Palouse, WA		Latah County	Nez Perce	Rapid River	Entire area should be closed to motor vehicles and recommended for wilderness.
Robert Pangle	Moscow, ID		Latah County	Nez Perce	Rapid River	Entire area should be closed to motor vehicles and recommended for wilderness.
Ashley Martens	Moscow, ID		Latah County	Nez Perce	Rapid River	Entire area should be closed to motor vehicles and recommended for wilderness.
David Hall	Moscow, ID		Latah County	Nez Perce	Rapid River	Entire area should be closed to motor vehicles and recommended for wilderness.
William Bonney	Moscow, ID		Latah County	Nez Perce	Rapid River	Entire area should be closed to motor vehicles and recommended for wilderness.

Salmon Face IRA

Table 2.36. Comments Received Specific to Salmon Face IRA, Nez Perce National Forest.

Name	Comment Origin	Organization	Received By	National Forest	Inventoried Roadless Area	Summarized Comment
Marc Lawrence	Potlatch, ID		Latah County	Nez Perce	Salmon Face	Entire area should be closed to motor vehicles and recommended for wilderness.

PUBLIC INVOLVEMENT AND COMMENTS

Table 2.36. Comments Received Specific to Salmon Face IRA, Nez Perce National Forest.

Name	Comment Origin	Organization	Received By	National Forest	Inventoried Roadless Area	Summarized Comment
Bennett Barr	Moscow, ID		Latah County	Nez Perce	Salmon Face	Entire area should be closed to motor vehicles to protect fish and wildlife and managed as wilderness.
David Hall	Moscow, ID		Latah County	Nez Perce	Salmon Face	Entire area should be closed to motor vehicles and recommended for wilderness.
Ashley Martens	Moscow, ID		Latah County	Nez Perce	Salmon Face	Entire area should be closed to motor vehicles and recommended for wilderness.
Bob Berry	Palouse, WA		Latah County	Nez Perce	Salmon Face	Entire area should be closed to motor vehicles and recommended for wilderness.
Maria Theresa Maggi			Latah County	Nez Perce	Salmon Face	Entire area should be closed to motor vehicles and recommended for wilderness.
Marci Miller	Moscow, ID		Latah County	Nez Perce	Salmon Face	Entire area should be closed to motor vehicles and recommended for wilderness.
Will Boyd	Moscow, ID	Friends of the Clearwater	Latah County	Nez Perce	Salmon Face	Entire area should be closed to motor vehicles and recommended for wilderness.
Robert Pangle	Moscow, ID		Latah County	Nez Perce	Salmon Face	Entire area should be closed to motor vehicles and recommended for wilderness.

Silver Creek – Pilot Knob IRA

Table 2.37. Comments Received Specific to Silver Creek – Pilot Knob IRA, Nez Perce National Forest.

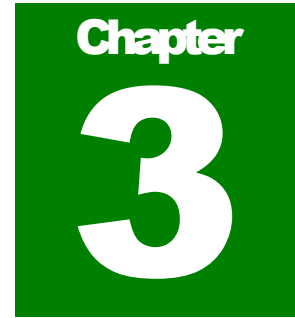
Name	Comment Origin	Organization	Received By	National Forest	Inventoried Roadless Area	Summarized Comment
Marc Lawrence	Potlatch, ID		Latah County	Nez Perce	Silver Creek – Pilot Knob	Entire area should be closed to motor vehicles and recommended for wilderness.
Garrett Clevenger	Moscow, ID		Latah County	Nez Perce	Silver Creek – Pilot Knob	Entire area should be closed to motor vehicles and recommended for wilderness.
Bennett Barr	Moscow, ID		Latah County	Nez Perce	Silver Creek – Pilot Knob	Entire area should be closed to motor vehicles and recommended for wilderness.
Bob Berry	Palouse, WA		Latah County	Nez Perce	Silver Creek – Pilot Knob	Entire area should be closed to motor vehicles and recommended for wilderness.
Robert Pangle	Moscow, ID		Latah County	Nez Perce	Silver Creek – Pilot Knob	Entire area should be closed to motor vehicles and recommended for wilderness.
Ashley Martens	Moscow, ID		Latah County	Nez Perce	Silver Creek – Pilot Knob	Entire area should be closed to motor vehicles and recommended for wilderness.
David Hall	Moscow, ID		Latah County	Nez Perce	Silver Creek – Pilot Knob	Entire area should be closed to motor vehicles and recommended for wilderness.
William Bonney	Moscow, ID		Latah County	Nez Perce	Silver Creek – Pilot Knob	Entire area should be closed to motor vehicles and recommended for wilderness.

PUBLIC INVOLVEMENT AND COMMENTS

West Meadow Creek IRA

Table 2.38. Comments Received Specific to West Meadow Creek IRA, Nez Perce National Forest.

Name	Comment Origin	Organization	Received By	National Forest	Inventoried Roadless Area	Summarized Comment
Marc Lawrence	Potlatch, ID		Latah County	Clearwater	West Meadow Creek	Entire area should be closed to motor vehicles and recommended for wilderness.
Garrett Clevenger	Moscow, ID		Latah County	Clearwater	West Meadow Creek	Entire area should be closed to motor vehicles and recommended for wilderness.
Bennett Barr	Moscow, ID		Latah County	Nez Perce	West Meadow Creek	Entire area should be closed to motor vehicles and recommended for wilderness.
David Hall	Moscow, ID		Latah County	Nez Perce	West Meadow Creek	Entire area should be closed to motor vehicles and recommended for wilderness.
Ashley Martens	Moscow, ID		Latah County	Nez Perce	West Meadow Creek	Entire area should be closed to motor vehicles and recommended for wilderness.
Bob Berry	Palouse, Wa		Latah County	Nez Perce	West Meadow Creek	Entire area should be closed to motor vehicles and recommended for wilderness.
Robert Pangle	Moscow, ID		Latah County	Nez Perce	West Meadow Creek	Entire area should be closed to motor vehicles and recommended for wilderness.
William Bonney	Moscow, ID		Latah County	Nez Perce	West Meadow Creek	Entire area should be closed to motor vehicles and recommended for wilderness.



Recommendations of the Board of County Commissioners

The Bush Administration has invited states to petition the federal government regarding the management of Inventoried Roadless Areas. Governor Kempthorne has taken up the offer and will submit recommendations to the Secretary of Agriculture to be placed in the Federal Register.

Once a state has developed and submitted its petition, and the petition is accepted by the Secretary, the Forest Service will work with the state to develop and publish a subsequent state-specific rulemaking for Inventoried Roadless Areas that addresses management requirements proposed by the petitioning state.

The Governor tasked each county to come up with recommendations for Inventoried Roadless Areas in the county and submit those recommendations to his office by March 1st 2006.

After considering public comments and reviewing the current management plans for roadless areas, the Latah County Commissioners have prepared recommendations for the Governor regarding the desired future conditions of Inventoried Roadless Areas in the region.

Latah County Commission Recommendations

Thank you on behalf of the citizens of Latah County for the opportunity to comment on the Inventoried Roadless Areas (IRA) in Idaho. Based on the public comments received by the Latah County Board of Commissioners, it is readily apparent that there is significant interest as well as varying opinions on the level of management for IRA's in Idaho. Given that Latah County currently holds no IRAs within its borders, the Board in no way wishes to assert its limited authority beyond our boundaries. Further, we gratefully appreciate our fellow county commissioners from other Idaho counties who have incorporated our citizens' comments into their final recommendations.

Generally, the Board recommends the following:

- 1) We respectfully request to be provided an opportunity to participate as a cooperating agency in any federal rule making regarding Inventoried Roadless Areas in the adjoining counties where public comments from Latah County have been made through this IRA process and in response to any future State of Idaho petition, without substantial cost to the County and otherwise subject to County budgets and future funding limitations.
- 2) For those lands covered by the adjoining county's wildfire mitigation plan, and which may intersect IRA lands, we respectfully request consideration and sensitivity along said boundaries, that management prescriptions be adjusted when necessary to support and foster public safety, health and welfare consistent with county wildland fire mitigation plans whenever possible
- 3) Forest health conditions and issues should remain an important consideration both within and adjacent to IRA's throughout Idaho. Consistent to respective Forest Plans currently adopted or revised in the future, the Board encourages both federal forest land owners, to recognize forest health issues and proactively seek and provide for a process to address said health issues in a timely and collaborative manner.

Specifically, the Board finds at least initially, there is general support for continuation of the present levels of management in the majority of the IRA's under consideration. We understand these comments and the Board's recommendations have been forwarded to the appropriate counties in which these IRA's are located and have been incorporated into their review and recommendation process.

Again, we appreciate the ability to help facilitate discussion and provide an opportunity for our citizens, businesses and rural communities to comment on these important issues affecting public lands in Idaho. Thank you.

Sincerely,

John A. "Jack" Nelson
Chairman

Tom S. Stroschein
Commissioner

Paul J. Kimmell
Commissioner

Resolution of Adoption

**BOARD OF COUNTY COMMISSIONERS
LATAH COUNTY, IDAHO**

RESOLUTION NO. 2006-02

A RESOLUTION ADOPTED BY THE LATAH COUNTY BOARD OF COMMISSIONERS DECLARES SUPPORT OF THE LATAH COUNTY INVENTORIED ROADLESS AREA RECOMMENDATIONS, WHICH INCLUDES A SUMMARY OF THE NATIONAL FOREST INVENTORIED ROADLESS AREAS IN THE COUNTY, A SUMMARY OF PUBLIC INVOLVEMENT AND COMMENTS, AND RECOMMENDATIONS BY THIS BOARD OF COUNTY COMMISSIONERS

WHEREAS, we the Board of Commissioners of Latah County, State of Idaho are the duly elected governing body of Latah County, a political subdivision of the State of Idaho, having such powers and duties as are set forth in the Constitution and Statutes of the State of Idaho; and

WHEREAS, we the Board of Commissioners have held public informational meetings and recorded oral public statements and comments; and

WHEREAS, we the Board of Commissioners have collected and reviewed written public comment on future proposed management of Inventoried Roadless Areas in surrounding areas; and

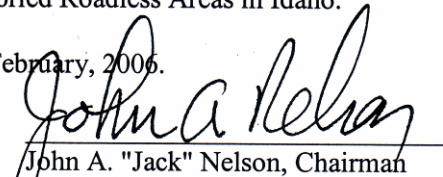
WHEREAS, we the Board of Commissioners have reviewed the management prescriptions of Inventoried Roadless Areas detailed in current National Forest Plans; and

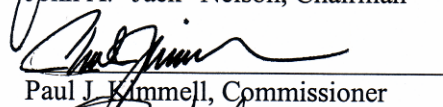
WHEREAS, we the Board of Commissioners have developed the recommendations as summarized in the Latah County Inventoried Roadless Area Recommendations document; and

WHEREAS, we the Board of Commissioners believe in sound forest management practices to perpetuate healthy and sustainable forests for future generations;

NOW THEREFORE BE IT RESOLVED, that we the Board of Commissioners do hereby adopt and support the Latah County Inventoried Roadless Area Recommendations, as the Latah County recommendations to the Governor of the State of Idaho, for a State of Idaho petition to the USDA Secretary for rulemaking regarding Inventoried Roadless Areas in Idaho.

Passed and approved this 22nd Day of February, 2006.


John A. "Jack" Nelson, Chairman


Paul J. Kimmell, Commissioner


Tom S. Stroschein, Commissioner

ATTEST:

Clerk/Deputy



Supporting Information

Board of County Commissioners

- Chairman. Jack Nelson
- Paul J. Kimmell
- Tom S. Stroschein

Latah County Courthouse
 522 S. Adams
 Moscow, ID 83843
 Phone: (208) 882-8580 or (800) 691-2012
 FAX: (208) 883-2280

Preparers

Northwest Management, Inc.

The following personnel participated in the formulation, compilation, editing, and analysis of this report.

Table 4.1. List of Preparers

Name	Affiliation	Role
William E. Schlosser, Ph.D.	Northwest Management, Inc.	Project Manager , Regional Planner
Vincent P. Corrao, B.S.	Northwest Management, Inc.	Resource Management Specialist, Principal in Charge
Vaiden E. Bloch, M.S.	Northwest Management, Inc.	GIS Analyst, Resource Appraiser
Tera R. King, B.S.	Northwest Management, Inc.	Technical Services Associate
Toby R. Brown, B.S.	Northwest Management, Inc.	Technical Services Associate
Adrienne Oryhon	Northwest Management, Inc.	Technical Services Associate

Table of Tables

Table 2.1. General public comments received by Latah County. 10

Table 2.2. Public comments specific to Latah County. 11

Table 2.3. Public comments specific to the Idaho Panhandle National Forest..... 12

Table 2.4. Public comments specific to the Clearwater National Forest. 12

Table 2.5. Public comments specific to the Nez Perce National Forest. 13

Table 2.6. Comments Received Specific to Blacktail IRA, Idaho Panhandle National Forest. 16

Table 2.7. Comments Received Specific to Grandmother Mountain IRA, Idaho Panhandle National Forest. 16

Table 2.8. Comments Received Specific to Pinchot Butte IRA, Idaho Panhandle National Forest. 16

Table 2.9. Comments Received Specific to Bighorn - Weitas IRA, Clearwater National Forest. 16

Table 2.10. Comments Received Specific to Hoodoo IRA, Clearwater National Forest. 17

Table 2.11. Comments Received Specific to Eldorado IRA, Clearwater National Forest. 18

Table 2.12. Comments Received Specific to Lochsa Face IRA, Clearwater National Forest. 18

Table 2.13. Comments Received Specific to Lolo Creek IRA, Clearwater National Forest. 19

Table 2.14. Comments Received Specific to Mallard - Larkins IRA, Clearwater National Forest. 19

Table 2.15. Comments Received Specific to Meadow Creek – Upper North Fork IRA, Clearwater National Forest. 20

Table 2.16. Comments Received Specific to Moose Mountain IRA, Clearwater National Forest. 21

Table 2.17. Comments Received Specific to North Fork Spruce – White Sand IRA, Clearwater National Forest. 21

Table 2.18. Comments Received Specific to North Lochsa Slope IRA, Clearwater National Forest. 22

Table 2.19. Comments Received Specific to Pot Mountain IRA, Clearwater National Forest. 22

Table 2.20. Comments Received Specific to Rawhide IRA, Clearwater National Forest..... 23

Table 2.21. Comments Received Specific to Siwash IRA, Clearwater National Forest. 24

Table 2.22. Comments Received Specific to Sneakfoot Meadows IRA, Clearwater National Forest. 24

Table 2.23. Comments Received Specific to Weir - Post Office Creek IRA, Clearwater National Forest. 25

Table 2.24. Comments Received Specific to Clear Creek IRA, Nez Perce National Forest. 25

Table 2.25. Comments Received Specific to Dixie Summit – Nut Hill IRA, Nez Perce National Forest. ... 26

Table 2.26. Comments Received Specific to East Meadow Creek IRA, Nez Perce National Forest..... 26

Table 2.27. Comments Received Specific to John Day IRA, Nez Perce National Forest. 27

Table 2.28. Comments Received Specific to Lick Point IRA, Nez Perce National Forest..... 27

Table 2.29. Comments Received Specific to Little Slate Creek IRA, Nez Perce National Forest..... 28

Table 2.30. Comments Received Specific to Mallard IRA, Nez Perce National Forest..... 28

Table 2.31. Comments Received Specific to Middle Fork Face IRA, Nez Perce National Forest. 29

Table 2.32. Comments Received Specific to North Fork Slate Creek IRA, Nez Perce National Forest. ... 29

Table 2.33. Comments Received Specific to O’Hara – Falls Creek IRA, Nez Perce National Forest..... 30

Table 2.34. Comments Received Specific to Rackliff - Gedney IRA, Nez Perce National Forest..... 31

Table 2.35. Comments Received Specific to Rapid River IRA, Nez Perce National Forest. 31

Table 2.36. Comments Received Specific to Salmon Face IRA, Nez Perce National Forest. 31

Table 2.37. Comments Received Specific to Silver Creek – Pilot Knob IRA, Nez Perce National Forest. 32

Table 2.38. Comments Received Specific to West Meadow Creek IRA, Nez Perce National Forest. 33

Table 4.1. List of Preparers..... 37

Table of Figures

Figure 1.1. Location Map of Latah County..... 1

Figure 1.2. Inventoried Roadless Areas in Northern Idaho..... 2

SUPPORTING INFORMATION

This document was developed by Northwest Management, Inc., under contract with the Idaho Association of Counties, working with the Board of County Commissioners in Latah County.

Citation of this work:

Schlosser, W.E., T.R. King, T.R. Brown, and A.L. Oryhon (compiled by). 2006. Latah County Inventoried Roadless Area Recommendations. March 1, 2006. Moscow, Idaho. Pp 39.

Last Page of Document



Northwest Management, Inc. 208-883-4488 Telephone
233 East Palouse River Drive 208-883-1098 Fax
PO Box 9748 NWManage@consulting-foresters.com e-Mail
Moscow ID 83843 <http://www.Consulting-Foresters.com/> Internet

**To Obtain Additional Copies
of this document contact:**

Latah County Courthouse
522 S. Adams
Moscow, ID 83843
Phone: (208) 882-8580 or (800) 691-2012
FAX: (208) 883-2280

Ver 20060301

(Remainder Intentionally Blank)